

CARDINHAM & MILLPOOL COMMUNITY MAGAZINE

DECEMBER 24 / JANUARY 25



ISSUE 113

Single Issue Price £1.25

Snowy Millpool range by Jenny Cruse

CONTACTS

Editorial Team

Lizzy Smart: 821101

lizzysmart@gmail.com

Peter Claridge

monnsoon90@yahoo.co.uk

Treasurer & Advertising

Simon Smart: 821101

simonseansmart@gmail.com

Distribution

Julia Maynard: 821216

juliamaynard1949@gmail.com

Design, Print & Production

NEW DETAILS: St Austell Printing Co.

01726 624900 (ext. 109)

Email: polly.airey@sapc.co.uk

CONTRIBUTIONS

NEW DETAILS!

Please send your contributions to

polly.airey@sapc.co.uk

- a Microsoft Word file is best.

Photos should be sent in uncompressed **jpeg** format.

We accept files and advertisements as high res **PDFs** (preferred).

If typed or handwritten, please send it to one of the Editors.

We select articles based on local interest and reserve the right to edit for clarity and length.

Copy Date for February/March 2025 Issue

Typed/Handwritten: MONDAY 13TH JANUARY
Deadline by Email: FRIDAY 17TH JANUARY

Advertising Rates & Sizes

Advertising is free for all local community and charity events.

All commercial advertising and events will be charged: 1/4 - £24pa. 1/3 page - £36pa. 1/2 page - £60pa. Whole page - £120pa. There is a minimum charge of £20 for advertising. One-off page advertorials - £25

Photographs & Scanning

Please email an original JPG with no compression or reduction, PDF or TIFF to cmcmag@outlook.com

Special photographs, drawings, illustrations, etc can be scanned.

Please contact cmcmag@outlook.com

For required format & any queries please contact **polly.airey@sapc.co.uk**

Need an extra copy?

Subscriptions £5pa (postage £11pa)

Single Issue £1.25 Contact Julia on 821216

The opinions expressed in articles in this magazine are those of the authors, and are not attributable to any member of the magazine production team.

FROM THE EDITOR

Hi everyone and welcome to the last issue of 2024.

Thanks everyone for sharing your lovely images of recent events in the Parish, without your contributions we wouldn't be able to produce this magazine.

There's been lots happening recently with Chess and Chilli night, Harvest services and Remembrance Sunday, and we have lots to look forward to over the forthcoming festivities! Into Bodmin has organised a Window Wanderland around the town, plus with Bodmin Lights Up this weekend we are all starting feel a bit more festive. And our recent snow shower helped set the wintry mood too, didn't it! (Good timing too to be included on the front cover!)

Enjoy your Christmas and Happy New Year, we wish you all peace, good health, love and happiness in 2025.

With best wishes to you all,

Lizzy, Polly, Simon, Marc, Peter and Julia



Luxury, peaceful, lakeside Shepherd Hut accommodation available to book now!

Featuring Smart TV, USB ports & Wi-fi, power shower, copper basin, espresso machine, leather sofa, wood burner, king size bed, barbecue, outdoor furniture, fire-pit, private lake use with boat & complete solitude.

Couples only, pet free

Contact THE GOOSE NEST

01208 821788 / 07809 396975

the_goose_nest@outlook.com

ST. MEUBRED'S CHURCH UPDATE

Services for St Meubred's, Cardinham - December & January

December 1st	9.30 am	Holy Communion
December 8th	11 am	Joint Service with Millpool Methodist Church in Cardinham Parish Hall
December 15th	9.30 am	Holy Communion
December 21st	6 pm	Village Carol Service followed by seasonal refreshments
December 25th	10 am	Family Holy Communion
January 5th	9.30 am	Holy Communion
January 12th	11 am	Joint Service with Millpool Methodist Church in Millpool Chapel
January 19th	9.30 am	Holy Communion
January 26th	9.30 am	Morning Prayer

Books for sale or swap in St Meubred's Church: If you have books or DVDs you are happy to donate to our library for others to read or watch, please leave them on the bookshelf as you enter the church. Do help yourselves to either.



**Village Carol Service
St Meubred's
Sat 21st December
at 6pm
followed by
light refreshments**

Tea Party & Chat

**December 5th and January 9th
from 2.30 pm.**

**Join us for a cuppa, cake and chat,
everyone warmly welcome.**





BODMIN TEAM MINISTRY

www.bodminteam.church



Dear Friends,

One of the carols we will be singing in the coming weeks is ***Joy to the World***. It is not one of my top favourites but it would probably feature in my top 10. Apart from the catchy tune the reason I like it is because it says joy not happiness to the world.

This is important because, for a whole variety of reasons, many people don't feel happy at Christmas, in fact, for many it can be a time of sadness, as they miss loved ones or feel they can't provide for their family in the way they would want to.

Joy goes deeper than happiness, it is the realisation that even in tough times there are things worth celebrating. One of my favourite verses from the Old Testament says ***"Though the fig tree does not blossom and there is no fruit on the vine.. yet will I rejoice in the Lord"***. Even in dark and challenging times we can celebrate the presence of God with us.
Joy to the World – the Lord has come, let earth receive her King.



So as we approach Christmas and the new year I wish you all joy rather than happiness.

Blessings,

John Hereward



Cardinham School

Grow your mind; aim high

secretary@cardinham.cornwall.sch.uk
01208 821326

Reception Starters 2025 - Applications Now Open at Cardinham School!

Is your child starting Primary School in September 2025?



Families are warmly invited to our open evening to stay and play, meet staff and enjoy a tour of our friendly and nurturing school



Friday 29th November 4.30-6pm



Come along and let your little ones explore our Early Years space, ask questions and enjoy some tea and cake.

**FOR MORE INFORMATION PLEASE CALL: 01208 821326
EMAIL: CARDINHAM@TPACADEMYTRUST.ORG**

PIC•COLLAGE

SUBSCRIPTION PAYMENTS

Subs. to the magazine are **£5pa**, plus any donation you would like to make. **Subs run from January - January.**

Please pay your distributor as usual, or if you prefer, by Bank Transfer.

The magazine bank account details to use are:

Sort Code: 30-97-28 Account No.: 02314833

Account Name: Cardinham and Millpool Community Magazine

Please add your name/address as reference

Don't forget postage, if applicable, £11pa

Thank you for paying promptly

Bodmin Banking Hub has now opened its doors at its permanent home located at 6 Fore Street Bodmin PL31 2HQ (the old Clarks shop) Open Monday to Friday 9am - 5pm

MONDAY - HALIFAX (ONCE BANK HAS CLOSED ON FORE STREET)
TUESDAY - LLOYDS (ONCE BANK HAS CLOSED ON FORE STREET)
WEDNESDAY - HSBC
THURSDAY - NATWEST
FRIDAY - BARCLAYS



Treveddoe Farm

Warleggan



Belted Galloway beef

Farmed in a regenerative system that encourages nature to flourish whilst producing delicious beef

100% pasture fed

Farmed to organic principles

Local delivery or collection from the farm

To order please contact Ben & Claudi on the details below

07825 568700

treveddoefarm@outlook.com



Dial -a- Ride



- Travelling from Cardinham & Millpool to Bodmin on Mondays & Thursdays.
- £5 return.
- Pick up from 8.15am, return lunchtime.
- Eligibility: mobility difficulties/over 55.
- Wheelchair access.
- To Wadebridge on first Thursday of the month - £6 return.

- Shopping trips.
- Visiting friends.
- GP appointments etc.

For more information
and to book call:

01872 266886

Events in the Parish - Pet Service and Harvest Service/Supper, Chilli and Chess - thanks to Rachael and Lizzy for the photos



CARDINHAM HELPLINE

Many thanks to all our volunteers for their contributions during the year.

Our thanks also to **The Cally Barrett Wind Turbine Community Fund** for their generous grant which covered the cost of our annual insurance and for the hire of the Parish Hall for our Helpline Lunches.

Our Christmas Dinner will be on Thursday 19th December.

Please note that lunch will served at 1.00 pm.

Please let Julia know if you are unable to attend (01208 821216).

The **Annual General Meeting** of the Helpline will be held in the Parish Hall on Tuesday 28th January at 4 pm.
Just a reminder that the **Helpline Lunch** is available to anyone who lives in the parish.

***Wishing you all a Merry Christmas
and a Happy New Year.***

Malcolm Maynard – Cardinham Helpline Treasurer



- MOBILE LOCKSMITH
- DOMESTIC, COMMERCIAL & AUTO
- INSURANCE RATED LOCKS
- ON SITE KEY CUTTING
- UPVC MECHANISMS, PATIO, GARAGE, DIGITAL, KEYSAFES
- REMOTE & CHIPPED KEYS SUPPLIED
- FREE ESTIMATES
- PROPERTY SECURITY & MANAGEMENT

www.duchylocks.co.uk

Tel: 0800 97 888 37

Mob: 07966 654267

Cardinham Parish Hall

Available for Hire



Cardinham Parish Hall
Church Road
Cardinham
Bodmin
Cornwall
PL30 4BN



Chairman Secretary & Bookings

Debra Best
01208
821554

Julie Best
01208
821227

www.cardinhamparishhall.weebly.com
cardinhamhall@btinternet.com

WINDOW WANDERLAND

Light up Bodmin's streets this December



1. Register your postcode with us
2. Decorate it.
3. We'll put you on our map.
4. Wander around Bodmin and see everyone's amazing windows!



intoBodmin



Bodmin Window Wanderland

running from.....
Fri 29th Nov - Sun 8th Dec

Free Workshops

Children & Families
Sat 23rd Nov 10.30 - 12.30pm

Adults 18+
Sat 23rd Nov 1 - 3pm



Inspo to get you started

Find out more....
www.intobodmin.co.uk

Pick up a starter pack
From the The Old Library Cafe £3.50
available from 11th Nov.....

Watch this.....



Register at
www.intobodmin.co.uk

The Old Library
10 Lower Bore St | PL31 2JX

Cardinham Parish Hall Events

POP UP PUB NIGHT



SATURDAY 7TH DECEMBER
WITH LIVE ENTERTAINMENT PROVIDED BY
THE 7 BAYS UKULELES

There is no Pop Up Pub in January, back in February.

MOUNT & WARLEGGAN EVENTS

Saturday 14th December
JOIN US FOR BREAKFAST

**9am - 11am with Full English Breakfast, Breakfast Baps,
Tea, Coffee, etc @ The Warleggan Jubilee Hall, Mount**

Saturday 21st December
POP UP PUB & FAMILY FUN EVENING
6pm - 10pm with BBQ and Bar
@ The Warleggan Jubilee Hall, Mount

CAROL CONCERT
with Levow Kesson choir
6th December starting at 6.30pm
Further details will be on posters around the villages,
we would be delighted if you come along.

Congratulations!

Rachael Farley-Claridge and home bred Arab gelding bred by **Jo & Pete Claridge** were awarded the **Darkness Shield** at the South West Endurance Awards for completing 300km this season from completing between 36-80km in a day. **Indus bin Ali** now 10yrs, was a bottle-fed foal after being rejected by his mother at a few days old. Now he's completed over 1200km with Rachael, crewed by her husband Adam and son Ollie. Rachael has now completed over 10,000 competitive miles with Endurance GB and has many more events planned for 2025 as the combination head into the New Year.

- Amazing achievement! Well done Rachael!



Remembrance Sunday at the Cardinham War Memorial

thanks to Janet Hereward for the photos.

News from MILLPOOL METHODIST CHURCH

Our **Harvest Festival** proved to be a very enjoyable event. Over fifty sat down to a delicious lunch. The Chapel was full for the excellent service that followed, led by Rod Harrison and the Chorale were in good voice. Shirley's car boot was filled to overflowing with items donated for the food bank.

We were sad to hear of the death of Peggy Ead at the age of ninety eight. Despite failing health she achieved her wish to join us for the Harvest Festival. We have happy memories of seeing her enjoy the occasion. Our love goes out to her family at this sad time.

The festive season is almost upon us. The Chapel will be decorated in time for Advent and the village Christmas tree put in place. On **Monday 2nd December at 7.15pm** the lights will be switched on with **Carol singing by the tree** and then continued in the Community Room with refreshments.

Diary dates:

Christmas Eve 6.15pm – Candlelit Carol Service.

Monday 30th December 6.00pm - Millpool's Christmas Party for all ages.

**Friday 24th January 7.30pm - Edith and Rick's Quiz. Teams of four.
Book with Shirley on 01208 813685**

Grateful thanks to the **Cally Barret Wind Turbine Community Fund** for awarding us a grant to replace our chapel windows. We were also awarded a grant from **Benefact House**, which we have match funded, to replace the original slates on the chapel roof. No more climbing on ladders for John, much to Shirley's relief!

Finally it just remains for me **to wish you all a happy and peaceful Christmas and New Year.** We only have to watch the news to know how fortunate we are to live in this part of the world.

Julia Maynard

Cardinham & District Gardening Club

November 2024

Autumn is with us and we and the Gardening Club has moved the meetings inside along with our tender plants! Our last visit was to have been to Marsh Villa Garden at Par, but the weather had other ideas and the torrential rain meant we had to postpone that plan!

Our first meeting in the Parish Hall since March was a talk given by Kim Parish, **Landscape Garden Designer**, on November 11th. She gave a very professional exposition of her career to date, leading to the design and execution of many show gardens from Chelsea, to our Cornwall Garden Show, winning medals, including gold, along the way. The second half of her talk highlighted photographs of plants she suggested for sites and seasons in our part of the South West. Kim now works from **Mitchell Fruit Farm**, where many of you will have picked fruit in the past. There will still be fruit, but also a number of demonstration gardens and **The Cornish Rose Company** will also be moving into part of the farm, so much to see and learn there.

Our next meeting is on December 9th in Cardinham Parish Hall, when we once again welcome Fiona Hammond, who will **demonstrate the creating of Christmas decorations**. We will enjoy some Christmas refreshments too! Everyone is very welcome to join us for this lovely start the Christmas season. The **AGM** is on January 13th when the speaker will be Richard Woods, from Lametton Mill, at St Keyne, the subject **'I had a good idea'** which charts the development of a table of plants for sale outside his house, to running a nursery specialising in unusual plants.

Three of us did some work to tidy up and thin out the plants on the Morrisons roundabout. I hope you notice the difference! Thanks to Penny and Margaret for helping me.

For details of our programme and events go to **<https://cardinhamgardenclub.wordpress.com/>**

We look forward to seeing you on December 9th

Libby

CHRISTMAS QUIZ QUESTIONS

Food round

1. What item is traditionally hidden in a Christmas pudding?
2. In which tin of chocolates would you find 'The Green Triangle'?
3. What's the name of a female turkey?
4. Which direction should you stir mince meat for good luck?
5. In which country is it tradition to eat KFC for Christmas dinner?

Songs round

6. In total, how many Christmas gifts are given in the Christmas carol 'The 12 Days of Christmas'?
7. How many 'la's follow the 'fa' in the chorus of Deck the Halls?
8. Which Christmas song contains the lyric "Everyone dancing merrily in the new old-fashioned way?"
9. Elvis isn't going to have a white Christmas he's going to have a....
10. What year was Mariah Carey's iconic Christmas hit All I Want for Christmas released?

Films round

11. In Charles Dickens' A Christmas Carol, what was the first name of Scrooge?
12. In the movie Elf, what was the first rule of The Code of Elves?
13. Which famous US political figure & celebrity makes a cameo in Home Alone 2?
14. In Love Actually, name the British boy band Billy Mack is competing against for Christmas Number One?
15. How many siblings does Kevin have in Home Alone?

History round

16. Which country started the tradition of putting up a Christmas tree?
17. Which British monarch delivered the first ever Christmas message?
18. Who was the first English king to have turkey for Christmas?
19. What date in January should all your Christmas decorations come down by, according to tradition?
20. Who was crowned King of England on December 25, 1066

General Christmas knowledge round

21. How do you say "Merry Christmas" in Spanish?
22. Three of Santa's reindeer's names begin with the letter "D." What are those names?
23. If you are born on Christmas Day, what is your star sign?
24. Which country donates the Christmas tree in Trafalgar Square?
25. What gifts did The Three Wise Men give Jesus on his birthday?

KING ARTHUR'S HALL

Recent archaeological findings have revealed that the ancient structure known as King Arthur's Hall on Bodmin Moor dates back to the Neolithic Period, approximately 5,000 to 5,500 years ago, much older than previously thought. The discovery was made by the Cornwall Archaeological Unit (CAU) as part of Cornwall National Landscape's "A Monumental Improvement" project, with funding from the National Lottery Heritage Fund.

Dr. Tim Kinnaird of the University of St Andrews commented on the historical impact of this finding: ***"To have a definite date for King Arthur's Hall in the later fourth millennium BC is a major revelation. We now have to re-evaluate our understanding of the prehistoric landscape of Bodmin Moor."***

Though the site's rectangular shape makes it unique in England, similar Neolithic structures exist in regions like Brittany, suggesting a potential ritual or communal function. Pete Herring, President of the Cornwall Archaeological Society, reflected on the implications, stating that ***"while the site may have had sacred uses, it retains its mystery as there are no exact Neolithic parallels for a structure like this in the UK"***.

James Gossip, Senior Archaeologist from Cornwall Archaeological Unit (CAU) and fieldwork director for the project, said: ***"The King Arthur's Hall project provided a once in a lifetime opportunity, using scientific dating to understand more about this unique and enigmatic monument - the main question being, when was King Arthur's Hall built?"***



Credit
Historic England



Arabian horseback sunrises & sunsets this autumn by Rachael Farley Claridge



USEFUL PHONE NUMBERS

(preceded by 01208 unless otherwise stated)

Police NON emergency		National 101
Blisland Inn, Blisland		850739
Cardinham Bellringers (Captain)	Nic Best	07747 724678
Cardinham Hall Bookings	Julie Best	821227
Cardinham School (Head)	David Jones head@cardinham.tpacademytrust.org	821326
Cornwall Councillor	Jenny Cruse cllr.jennifer.cruse@cornwall.gov.uk	07710 219465
Film Club	Debra Best 821554 Sonia Tucker 821382	Julie Best 821227 Nic Best 821459
Flowers for St. Meubred's	Libby Pidcock	821303
Friends of St. Meubred's	Loveday Sutton	821350
Gardening Club	Loveday Sutton	821350
Helpline	Gill Long / Jenny Saunter	821745 /07854 545467
London Inn, St Neot		01579 326728
Methodist Circuit Office	office@bpwccircuit.org.uk	895157
Millpool Chapel	Shirley Doran	813685
Millpool Coffee Morning	Julia Maynard	821216
Millpool Institute	John McDonald	821448
Mother & Toddler Group	Crissie Butler	07540 181416
Parish Council Chair	Julie Best cardinhamclerk@gmail.com	821227
Parish Council Clerk	Jo Wilson	01841 520796
Bodmin Team Ministry, Team Rector	Paul Holley	07470 192378
Sports Club	Les Spong	821591
St. Meubred's Focal Minister	Revd John Hereward	79078
St. Meubred's PCC Secretary	Rosemary Rowe	821225
St. Meubred's Reader	Ann Kerridge	76714
St Neot Brownies	Karen Cunningham	01579 321581
St Neot Scout Group	John Body	01579 320334
Warleggan Young Farmers	Laura Colwill lauragco@hotmail.co.uk	07913 330078

Please send corrections or additional numbers you would like to see to lizzysmart@gmail.com Tel 821101

I am forwarding the following article, which may be of interest to our tourism industry and our community, from the steering committee of the Bodmin Moor International Dark Skies. We are an internationally recognised designation which requires annual accreditation. We aim to preserve and enhance the dark night sky above Bodmin Moor for its beauty and to support the wellbeing of residents and wildlife and to demonstrate the importance of a dark night sky, appropriate use of lighting and reducing light pollution. We would welcome any members of the community to join us and please contact me if you would be interested in joining us.

Cllr Jennifer Cruse (Chair Bodmin IDA)

TAPPING INTO AUTUMN & WINTER ASTROTOURISM

You may (or may not) be aware that there are around 200+ dark sky places throughout the World. There are 8 in England. Two of these are in Cornwall – West Penwith, and Bodmin Moor. These are well defined Areas of Outstanding Natural Beauty, but border with significant areas of the rest of Cornwall. Caradon Observatory is linked with the Bodmin Moor Dark Sky Place www.darksky.org

A dark sky place is cherished for its pristine skies at night. You can see far more in the night sky without the detrimental effects of light pollution from these dark sky places than the average town and certainly from any city in the World. We know that people feel more connected to the environment when they can see the stars and planets up above – it is really awe inspiring. Dark sky places are not chosen at random. There is a rigorous process by which the application to Darksky International must show not only how good the skies are but that there are things in place to keep things this way and an educational programme that sits alongside it addressing light pollution. We must cherish these dark sky places because we know that our skies year on year are being lit up by artificial light; more so now than ever before. This artificial light at night is not good for wildlife, or human health. It's bad for the climate and light going into the night sky is wasted energy in a time of a climate crisis. There is also no convincing evidence that lighting up areas of perceived high crime has any effect on the rates of crime. If you grow up in a city, the chances are you will never see the milky way arching overhead from horizon to horizon. How can we expect our children to reach for the stars if they cannot see them? We want people to experience these dark sky places. We want them to come here, to see the beauty themselves, to help keep it as we wish it to remain, but also to take the ideas of how important dark skies are back home. Wherever they are from, perhaps as a result of a visit to a dark sky place, they too can look to address light pollution closer to home.

So, there are 2 main things that a local business linked to visitors can do: Firstly, take a look at your own exterior (and interior) lighting and shielding and compare it to the good practice that we've published on Darksky.org and the UK chapter of www.darksky.uk

If you can keep light to a minimum overnight: where you need it, for the right amount and for the right time then not only will you save money on your electricity bill, but you'll be helping your local wildlife, and your visitors can more easily look up and see the stars. Using cooler temperature bulbs (<2700 Kelvin) too doesn't affect our ability to see things and it is a significant improvement on those harsh blue/white LED's that scatter more light into the sky. If you've got any close neighbours with lights that are not in keeping with a dark sky, often a simple discussion about all the benefits goes a long way to help. They may even provide a local business that could also benefit from astrotourism.



The Milky Way – an image taken of the Milky Way by WT from Bodmin Moor unaffected by light pollution. The bright star is Deneb, with the North America Nebula close by.

Secondly, what about encouraging people to stay with you or visit your business in the Autumn and Winter?

The Moor and its dark skies are easy to access wherever you are in the North and Southeast of Cornwall. When the clouds and rain stay away, and if the Moon is new, the sky from Bodmin Moor is truly spectacular. You don't need any fancy equipment: Some folding chairs, a flask of a hot beverage and even a rudimentary knowledge of the constellations is all that you need. Do wrap up warm of course. Combining a visit when there is a meteor shower means that there's a good chance of seeing one streak across the sky. In October we have the Orionids. In October through to November there's the Taurids. And the Leonids that peak around November 18th are usually a really good time to see some primordial space debris light up the sky. Finally, the Geminids and Quadrantids can be seen in December and January respectively. Make it easy for people to get outside at night and see the wonderful skies above. Link up with other like-minded businesses where you can offer different things focused around 'dark skies'.

The dark sky discovery site has a lot of information about simple stargazing that's easy to follow: https://www.darkskydiscovery.org.uk/the_night_sky/

We have designated places on Bodmin Moor with darksky signage. These include the Hurlers at Minions, Roughtor carpark near Davidstow and Siblyback reservoir.

But essentially there are plenty of small villages and car park parking areas dotted around the Moor that allow a great access to the night sky.

This year you have a bonus to tap into. You may have seen our images of the Aurora (Northern Lights) from the Moor? The Sun is currently at solar maximum, and certainly over the next few months the chances of seeing the Aurora when the nights are dark are very good. And of course, the best places to see them are from where the skies are intrinsically dark and free of light pollution. Yes, that means Bodmin Moor. We've shown that you don't need to travel way up North (although you can, and there are some amazing dark sky places such as Northumberland, North Yorkshire Moors and Dales) to see this wonder of nature.



The May 2024 Aurora from Bodmin Moor by WT. The Moon towards the lower right behind a tree gives an idea of scale!

If you have a website, why not add something about Bodmin Moor dark skies? Add something about when the sky is clear that you can see more stars from these dark sky places than anywhere else in nearly all the rest of England? Use one of our Aurora or dark sky photos (but credit the photo to us please) to show that we can still see it all the way down in Cornwall. There are plenty of photos you can use from our Facebook pages. (Caradonobservatory)

Whilst we cannot control the weather, that's the case everywhere else in the UK. The beaches are still here (and much quieter). The cosy pubs and restaurants are still open and there still plenty to see and do.

Just add that bit of sparkle – a beautiful night sky that we're trying to preserve and maintain for all people to see both now and into the future.

Dr Wayne Thomas
Bodmin Moor DarkSky International Delegate
Caradon Observatory, Upton Cross, Cornwall

CARBON BALANCED PRINT

**OFFSET CARBON.
PROTECT SPECIES.
ENHANCE YOUR
BRAND.**

**AS A CARBON BALANCED PRINTER,
WE OFFSET OUR ANNUAL EMISSIONS
WITH WORLD LAND TRUST.**

**ASK US ABOUT CARBON BALANCING
YOUR NEXT PRINT JOB TO HELP
PROTECT THREATENED HABITAT.**



**WORLD
LAND
TRUST™**

www.carbonbalancedprint.com
CBP2229

 **St Austell
Printing Company**

**www.sapc.co.uk
01726 624900**



TREMEER
CONSERVATORIES



Tremeer Conservatories have been creating bespoke conservatories and orangeries since 1991. We can construct them in either timber or UPVC and in any colour.

We can also supply windows, doors, glass balustrades and glass roofs as well as building standard or unique extensions.

To find out more information:
Call: **01208 851182 or 07798 644 293**
Email: **tremeerconstruction@gmail.com**





Matthew Keast Plumbing and Heating

All aspects of plumbing and heating undertaken
Gas, LPG

Central Heating, Bathrooms, Servicing, Certification
New Builds, Renovations

Tel: 01208 821364

Mob: 07957 727183



R. MEARS & Sons CHIMNEY SWEEP

Vac & Brush

Cowl Fitting Service

CCTV investigation work carried out

01840 261 221 • 07737 533392

www.sweepcornwall.com

*Covering Cornwall & West
Devon*



HETAS®
Registered



N0711/30134

**ANDREW OATES
GARDEN MACHINERY
SERVICE
& REPAIRS**



New machinery on request
All leading brands
Prompt service.
Competitive rates
25 years experience
Collection & delivery
service available



**01208 821527
07791930935**

**Ground
Maintenance
Services**

**Hedging & Fencing
Stone Walling
Hedge Laying
Tree Pruning**

**Decking & Patios
Ground Clearance**

Contact:

Greg
07887 877103
01208 821687



Dave
07779 096331
01208 821318

**MARK FITCH
CHIMNEY
SWEEP**

- * BRUSH & VACUUM
- * CLEAN, RELIABLE SERVICE
- * COVERING ALL S.E. CORNWALL
- * DISCOUNT FOR MULTIPLE CHIMNEYS
- * COWLS & GUARDS FITTED
- * STOVES SERVICED



*Call
Mark on:*

**01579 350762
07773 462643**





APS
ARCHITECTURAL
DESIGN

A bespoke Architectural Design service
from inception to completion

For a free consultation
call 01208 821126

www.apsarchitecturaldesign.co.uk



www.bodminairfield.com
Want to Fly an Aeroplane?

Treat yourself to a trial lesson
Gift vouchers also available for the Perfect Gift!



Obtain your Private Pilot License
and other ratings.
Call us for more details

Cornwall Flying Club Ltd. 01208 821419



DARCROFT GARAGE & MOT CENTRE

FOUR WINDS ~ BODMIN ~ PL30 4HH

Class 4 & 7 MOTs



Cars & Camper Vans

Light Commercial

Horse Boxes & Trailers

All Repairs Undertaken

Servicing

Diagnostics

Welding

Local Breakdown Recovery

Friendly Efficient Local Service & Advice

Tel: 01208 821238

N. J. BLANCHARD

Plant Hire & Groundworks

M: 07791 072806

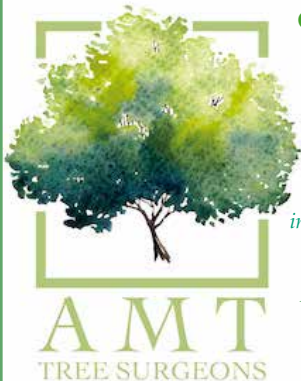
E: nick.blanchard@hotmail.co.uk

N J Blanchard specialising in:

- Drainage
- Pipe-laying
- Concreting
- Landscaping
- Site Clearance
- Scrub Clearance
- Septic Tanks
- Sand-schools & Yards

Full range of Plant machinery from mini-digger to heavy plant

For examples of our work please visit us on Facebook



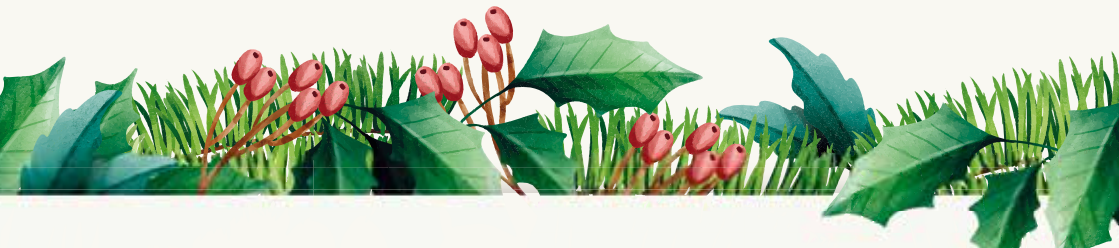
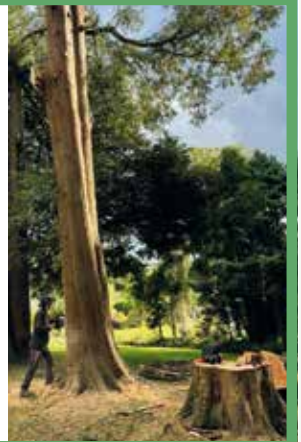
Contact: Alicia Morton-Thurtle
on 07554 890508, or email
amttreesurgeons@gmail.com

South West based, female owned
Tree Surgery business.

Covering all aspects of tree care
including, pruning, felling, fruit tree pruning
in the winter, hedge trimming, logging and
waste removal from site.

AMT Trees also offers emergency & call
out work in storms or accidents.

Located in Lanlivery.





Autumnal scenes from Treslea Downs, Cardinham & Lanhydrock - thanks Lizzy for sharing!



Warleggan YFC

Following the clubs AGM on the 7th of October at Mount Jubilee Hall, the team of young people have entered their new rolls of office in full swing. Welcoming Olly Jay back into the chairman's seat and Andrew Rowe as Club Secretary, Jodie as treasurer and a very keen Jack as programme secretary, there are many other offices filled by the YFC members themselves, either as individuals or as a group such as club photographers. The club is continued to be guided on a weekly basis with the club leaders Ed and Stewart, supported by the new Club president, Sandra Rowe, and her team of advisory members. Who behind the scenes are actively arranging the annual dinner and dance for Saturday 15th February 2025.

Over the past few weeks, the club has had a couple surprise evenings hosted by the chairman and a second the "Boys", each of these evenings was be arranged by the relevant team members providing evenings of fun and games. The final week of November (Monday 25th) and 2nd December the members take on a craftier feel for their evening's entertainment painting pebbles and making Christmas wreaths, carefully lead by former club member Lynsey White from Full Blooms florist, Liskeard. December is always a busy month for the club members with County Carol service at Truro Cathedral (21st December) and the Tinsel Ball on the 16th of December held at Berties night club Newquay, and a Club meal at the London Inn on the 10th of December. With some Bingo planned in the New Year, dates and venue to be confirmed.

While the club is strong in spirit Warleggan YFC always ready to welcome new young people who are happy to have some fun and make lifelong friends. Over 50% of the clubs' current members are not farmers and the ones who are agriculture related are more than happy to talk about thing s other than farming for their Monday evenings. So, if you know anyone who is between the ages 14-28, why not give the club chairman a call and pop along for the evening.

We wish you all a Merry Christmas and a Happy New Year. See you all in 2025 with some more club news and events.

For more information about Warleggan YFC Contact our chairman Olly on 07455077498 or email warlegganyfc@gmail.com

CALLY BARRETT WIND TURBINE COMMUNITY FUND

Cally Barrett Wind Turbine Community Fun welcome grant applications from organisations who are based in the Parish of Cardinham and who's work will benefit its inhabitants. For more details or an application form please contact **charlottematthews@btconnect.com** or **01208 72960**.

THE PURPOSE OF THE CHARITY IS THE PROMOTION OF ANY CHARITABLE PURPOSES FOR THE BENEFIT OF THE COMMUNITY IN THE PARISH OF CARDINHAM, AND IN PARTICULAR THE ADVANCEMENT OF EDUCATION, THE PROTECTION OF GOOD HEALTH, BOTH MENTAL AND PHYSICAL AND THE RELIEF OF POVERTY AND SICKNESS.

They came from the east...

About 200 miles, north east of Cornwall, a decision is made. '*We'll send them down to Cornwall today, probably around Cardinham way*'. So off they go...doesn't take long until destination is reached and then another decision has to be made. From Cardinham they travel north for a few miles, then they turn round and travel back, near Bodmin Airfield, and then south before returning over Cardinham again and then north again. '*Day out in Cornwall!*' they laugh to themselves. They can spend hours doing this keeping, very accurately, to this specific route...changing height.

You may have heard them, or even seen them whilst on their travels...what are they doing?

Of course, you may have guessed, 'they' are the crew of a **RAF Globemaster** on a training flight, in un-restricted airspace. They are based at RAF Brize Norton in Oxfordshire. During several hours this huge aircraft will fly an accurate 'race track' circuit. Bodmin Airfield will have been informed of this training flight, in fact the aircraft will be several thousand feet above the rolling Bodmin Moor causing no problems to low flying light aircraft. During their accurate 'circuits' they may change heights but not their designated route. We can see them, particularly if the weather is good. If not, the giant wonderful engines can be heard above the cloud thundering away.

This flying giant is 174' long (a tennis court is a mere 78') with a wingspan of 170' and an overall height of 55'... that's more than three double-decker busses piled on top of each other. The Globemaster is primarily a transport aircraft capable of



carrying over 100 paratroopers, or heavy armoured vehicles, even a Chinook helicopter. It is capable of cruising at 450 knots and has a range of 2,400 miles, without being re-fuelled.

Brize Norton is the RAF's biggest airfield and is home to approximately 5,800 military staff, 1,200 contractors and 300 civilian staff. The station accommodates the RAF's strategic and tactical air transport and air-to-air refuelling fleets, operating the Boeing C-17 Globemaster III, Airbus A400M Atlas and Airbus A330 MRTT Voyager.

(Photo from Pembrokeshire Herald online)

Winter Fayre ShelterBox 'Guess The Country' game winner

Firstly, many thanks to everyone who supported our charity in participating in this bit of fun at the Winter Fayre held at the Jubilee Hall. Thanks also goes to **Julie Grose** for pulling together the **Winter Fayre** thus providing me with opportunity to raise funds and awareness of what **ShelterBox** is doing.

The winner was **Zoe Neale** from Cardinham who correctly guessed France and won the prize of a bottle of champagne and two champagne flutes. **Keith Hill** and **Mandy Marsan** also guessed correctly. Well done all. However, following a draw made of all three correct results, Zoe was the winner.

All funds collected that day have been donated to **ShelterBox** with no deductions for the prize. It was particularly pleasing to forward the funds at this time as I had just received advice from **ShelterBox** of a devastating development in Gaza. Leaving all politics aside, apparently an airstrike hit a designated 'safe zone', where hundreds of people were living in **ShelterBox** tents. This camp, established with relevant agencies/ international partners, was meant to be a sanctuary. Instead, it became a scene of devastation. Those who were not killed are homeless once again. This tragic event has deeply affected all at **ShelterBox**.

But despite the challenges, **ShelterBox** remains committed to its response in Gaza. It will continue working with its partners to provide emergency shelter and lifesaving aid to those displaced by the conflict.

But the charity cannot do this alone. Therefore, a very big **Thank You / "MEUR RAS" again to those who supported us at the Winter Fayre** and know that your contribution is greatly and sincerely appreciated.

Together, we made a difference.

Mrs Linda Bowers-Kasch

Charity Ambassador ShelterBox
November 2024



CHRISTMAS QUIZ ANSWERS

Round 1 - Food

1. A coin
2. Quality Street
3. A hen
4. Clockwise
5. Japan

Round 2 - Songs

6. 364
7. Eight: Falalalalalalala....
8. "Rocking Around The Christmas Tree"
9. Blue Christmas
10. 1994

Round 3 - Films

11. Ebenezer
12. Treat every day like Christmas
13. Donald Trump
14. Blue
15. 4

Round 4 - History

16. Germany
17. George V in 1932
18. Henry VIII
19. January 6
20. William the Conqueror

Round 5 - General Christmas knowledge

21. Feliz Navidad
22. Dancer, Dasher, and Donner
23. Capricorn
24. Norway
25. Gold, Myrrh, and Frankincense



CARDYNHAM CHURCH

Have you ever been to our Christmas morning service at St Meubred's? Years ago I sometimes took these. On Christmas morning you never knew who or how many would come. One year I focused on the wonderful beginning of St John's Gospel - "***In the beginning was the word.***" At "***the light shines in the darkness,***" we all lit indoor sparklers. At "***the Word was made flesh***" I led everyone to the corner behind the altar where there is a small, hidden, wonderful, stained glass window of the **Madonna and Child**.

I've often wondered how it came to be there. Unless you go up close it's completely hidden. The glass was replaced after war damage, but was it always there? As usual google came up with some interesting facts. This stained glass was made by **Francis Walter Skeat** (1909 – 2000), an English glass painter responsible for over 400 windows. In our church the two windows to the left and the right of the chancel are also his. He was a pupil of Christopher Webb, who made our beautiful east window. There was stained glass in this window before. An angel with a scroll saying "*There shall be no more death.*" It dated to 1873, so this window goes back at least to 1873. Close by, the vestry was built during the 19th century and our wonderful Cardinham cross and the head of the cross by the steps dug out of the east wall. A Mr Oliver of Bodmin, architect and builder restored the church which reopened on 2nd May 1873.

Many of our windows are in memory of loved ones. The windows destroyed in the war were given by Louisa Anne Miles, daughter of Thomas Grylls, rector 1814-1845, who died 1871. Only one of her windows survives, at the east end of the north aisle. Our lovely Madonna and Child were given in memory of Nellie Ralph. If anyone knows anything about Nellie Ralph, I'd love to know. All I do know is that she was the first wife of Frank Ralph who once farmed at Maidenwell and that she probably died in 1947 or 1948.

So as part of your celebration of Christmas, come and see this beautiful window. If you love it as much as I do, why not buy a card with its picture? Most of all join us in our Carol service and our Christmas morning celebration,. happy Christmas from St Meubred's.

Ann Kerridge



Cornwall Councillor Jenny Cruse



The new **Waste Collection** has commenced and as I have not heard any complaints, I am hoping that all is going well. If you require an extra bin or prefer a seagull sack, or need to check your collection dates, please visit www.cornwall.gov.uk/wastechanges.

Small electrical items such as irons, toasters, kettles, laptops and phones can now be recycled at Bodmin Library, Chy Tremain and the Leisure Centre.

It has been a busy week at County Hall. The Vote of No Confidence in our Leader was soundly defeated. I spoke in support of Linda; she has worked tirelessly to promote Cornwall both locally and on the national arena. She has always found time to listen, advise and support me and has made me feel a valued member of the Council. Her dedication to the role as Leader is immense and she has had to steer us in very difficult times. Any suggestion that she is not well supported was finally put to rest. I can assure you that she has the support of all her Conservative group and as proved by the vote many of the opposition as well.

On Thursday at Health and Adult Social Care I spoke about my concerns for **Southwest Water** adding fluoride to our water. Philosophically I cannot support this and suggested we should be putting all our efforts into encouraging schools to promote healthy eating and good oral hygiene. The recently published **Healthy Schools Tool Kit** has an excellent link on Oral Health and can easily be incorporated into the school curriculum. There are too many uncertainties surrounding fluoride and ethically I do not agree with having this imposed upon the population. The only option to decline would be drinking bottled water, which is hardly a sustainable solution.

I am also concerned to hear that Labour are now removing the £50 subsidy from SW Water bills, this is beginning to feel like a war on pensioners, businesses, farmers and now anyone living in the Southwest!

Last year I laid an Armistice wreath at Lanivet memorial but this year I am at The Keep then Blisland and Cardinham. We will never forget the sacrifice made by those brave souls who gave their lives for us to live in freedom.

I do hope you all find time to enjoy our wonderful Autumn colours. We may not have much in the way of sun but the turning leaves, and colourful acers and oaks make such a splendid sight and certainly something to uplift us as winter comes closer.

As this is the last issue before Christmas, *may I wish you all a peaceful and enjoyable Christmas* and may I ask that wherever and whenever possible we all try and support our local suppliers and businesses over this period since it is evident so many of our local enterprises do face a very difficult time.

Jenny

Email: cllr.jennifer.cruse@cornwall.gov.uk Mobile: 07710 219465

REGULAR EVENTS

DATE	WHEN	EVENT	WHERE
Monday	7.30pm	Warleggan Young Farmers' Club	JHM
Monday	7.15pm	Millpool Chorale Practice	CRM
Tuesday	11.45-12.45pm	Pilates Mixed Ability Class	JHM
Tue (1st in month)	2.30pm	Book Club (821208)	CRM
Tue (3rd in month)	7.30pm	Parish Council Meeting	CPH
Tue (last in month)	10.30am	Millpool Coffee Morning & Book Swap	CRM
Wed (except 3rd)	7.30pm	Bell Ringing	St. Meubred's
Wed (2nd in month)	2.30-4.30pm	Crafternoon	CRM
Wed (4th in month)	7.30pm	Warleggan History Group	JHM
Tue (except 3rd)	7.00pm	Bell Ringing	St. Meubred's
Thur (1st in month)	2.30-4pm	Tea Party & Chat	CPH
Thur (3rd in month)	12.45pm	Helpline Lunch	CPH
Thur (last in month)	All day	Pensioners 10% Discount	Trago
Fri (term time only)	9.15-11.15am	Little Fawns Toddler Group	CPH
Sat (1st in month)	7.30-10.30pm	Pop Up Pub Night	CPH
Sat (last every month)	9am-3pm	Farmers Market , Mount Folly	Bodmin
Sun (1st in month)	10.45am-12	KIDZ CLUB	CRM
Sun	10.30am	Table Tennis (821409)	JHM

CRM = THE COMMUNITY ROOM, MILLPOOL METHODIST CHURCH

CPH = CARDINHAM PARISH HALL, JHM = JUBILEE HALL MOUNT

PLEASE NOTE: PLEASE CHECK IF YOU PLAN TO ATTEND ANY OF THEM.

Please check village notice boards, emails and organisers for details.

If you have an event you would like us to publicise send details to cmcmag@outlook.com