

CARDINHAM & MILLPOOL COMMUNITY MAGAZINE

OCTOBER / NOVEMBER 2024



Chewing the cud
by Fiona Hammond

ISSUE 112

Single Issue Price £1.25

CONTACTS

Editorial Team

Lizzy Smart: 821101

lizzysmart@gmail.com

Peter Claridge

monnsoon90@yahoo.co.uk

Treasurer & Advertising

Simon Smart: 821101

simonseansmart@gmail.com

Distribution

Julia Maynard: 821216

juliamaynard1949@gmail.com

Design, Print & Production

NEW DETAILS: St Austell Printing Co.

01726 624900 (ext. 109)

Email: polly.airey@sapc.co.uk

CONTRIBUTIONS

NEW DETAILS!

Please send your contributions to

polly.airey@sapc.co.uk

- a Microsoft Word file or PDF is best.

Photos should be sent in
uncompressed **jpeg** format.

We accept files and advertisements
as high res **PDFs** (preferred).

If typed or handwritten, please send
it to one of the Editors.

We select articles based on local
interest and reserve the right to
edit for clarity and length.

Copy Date for Dec 2024 / Jan 2025 Issue

Typed/Handwritten: MONDAY 11TH NOVEMBER

Deadline by Email: THURSDAY 14TH NOVEMBER

Advertising Rates & Sizes

Advertising is free for all local community and charity events.

All commercial advertising and events will be charged: 1/4 - £24pa. 1/3 page - £36pa. 1/2 page - £60pa. Whole page - £120pa. There is a minimum charge of £20 for advertising. One-off page advertorials - £25

Photographs & Scanning

Please email an original JPG with no compression or reduction, PDF or TIFF to
cmcmag@outlook.com

Special photographs, drawings, illustrations, etc can be scanned.

Please contact cmcmag@outlook.com

For required format & any queries please contact **polly.airey@sapc.co.uk**

Need an extra copy?

Subscriptions £5pa (postage £11pa)

Single Issue £1.25 Contact Julia on 821216

The opinions expressed in articles in this magazine are those of the authors, and are not attributable to any member of the magazine production team.

FROM THE EDITOR

Hello to you all and welcome to the penultimate magazine of the year!
Crazy how fast this year has gone.

With the weather drawing in and the evenings turning darker, our thoughts turn to how the seasons are changing and celebrations to look forward to before we fully hibernate during the colder months! We are looking forward to Harvest Supper, Halloween, Guy Fawkes, but this year Remembrance Sunday will be a more poignant day as we remember and mourn the awful loss of two young residents in our community. Our thoughts are with you.

Jenny Cruse takes us down memory lane in her garden on Page 29 and Cardinham Church invites us to go back in time to medieval times on page 32.

With best wishes to you all and happy reading!

Lizzy, Polly, Simon, Marc, Peter and Julia



Luxury, peaceful, lakeside Shepherd Hut accommodation available to book now!

Featuring Smart TV, USB ports & Wi-fi, power shower, copper basin, espresso machine, leather sofa, wood burner, king size bed, barbecue, outdoor furniture, fire-pit, private lake use with boat & complete solitude.

Couples only, pet free

Contact THE GOOSE NEST

01208 821788 / 07809 396975

the_goose_nest@outlook.com

ST. MEUBRED'S CHURCH UPDATE

Services for St Meubred's, Cardinham - October & November

October 6 th	6 pm	Harvest Festival with Warleggan Young Farmers followed by Faith Supper, (no other service in St Meubred's)
October 13 th	10 am	Animal Service followed by light refreshments
October 20 th	3 pm	Lunch at 1pm followed by Harvest Festival Service at 3pm
October 27 th	9.30 am	Morning Prayer
November 3 rd	9.30 am	Holy Communion
November 10 th	10.55 am	Remembrance Day Service at The War Memorial followed by light refreshments in the Parish Hall
November 17 th	9.30 am	Holy Communion
November 24 th	9.30 am	Morning Prayer

Books for sale or swap in St Meubred's Church: If you have books or DVDs you are happy to donate to our library for others to read or watch, please leave them on the bookshelf as you enter the church. Do help yourselves to either.

HARVEST FESTIVAL Sunday 6th October, at 6 pm followed by Faith Supper

VILLAGE CAROL SERVICE Saturday 21st December, at 6pm, followed by light refreshments

Tea Party & Chat

October 3rd and November 7th
from 2.30 pm.

Join us for a cuppa, cake and chat,
everyone warmly welcome.





BODMIN TEAM MINISTRY

www.bodminteam.church

Dear Friends,

In common with countless villages across the country, we have a church surrounded by a churchyard and a separate cemetery complete with a war memorial. These are places redolent with memories – as a phrase from one of our prayers says they are places where we remember those “***we love but see no longer***”. They are also places where rituals are performed – on Remembrance Sunday we will be gathering at the war memorial, saying familiar words, reading out names and keeping silence.

Both place and ritual play an important role in keeping memories alive. It is a long time ago now since my grandparents died but if at no other time of year I remember them on Remembrance Sunday as they were all deeply impacted by the first World War.

At the heart of Christian worship is a ritual where we remember Jesus and His death for us. When we celebrate Holy Communion we take bread and wine and remember the last supper Jesus shared with His disciples, reminding ourselves of His death for us and the new life that death unleashed.

In recent weeks we have been deeply saddened by the deaths of two young people in our community. Our thoughts and prayers are with their family and friends at this dreadful time. May we be determined to keep their memory alive, as we will be saying on Remembrance Sunday “***We will remember them***”.

Blessings,
John Hereward





Reception Starters 2025 – Applications Now Open at Cardinham School!

Dear Parents and Community,

We are excited to announce that applications for Reception Starters 2025 at Cardinham School are now open! At Cardinham, we believe in nurturing potential and inspiring futures, providing an educational experience that goes beyond the curriculum.

Our school is set in an incredible outdoor setting, where we encourage children to discover, be inspired and succeed. We see each child as unique, offering them the support they need to grow and thrive in a welcoming and inclusive environment.

We invite you to visit us for a school tour to see for yourself what makes Cardinham School so special. Experience our vibrant learning environment, meet our dedicated staff, and find out how we can help your child take their first steps into education.

Book your tour today!

Call us at 01208 821 326 or email cardinham@tpacademytrust.org

For more information, visit our Facebook page [Cardinham School](#)

Please share this exciting opportunity with friends, family, and neighbours - help us spread the word!

We look forward to welcoming you to Cardinham School.



SUBSCRIPTION PAYMENTS

Subs. to the magazine are **£5pa**, plus any donation you would like to make. **Subs run from January - January.**

Please pay your distributor as usual, or if you prefer, by Bank Transfer.

The magazine bank account details to use are:

Sort Code: 30-97-28 Account No.: 02314833

Account Name: Cardinham and Millpool Community Magazine

Please add your name/address as reference

Don't forget postage, if applicable, £11pa

Thank you for paying promptly



The Works,
South Penquite,
Blisland, Bodmin,
PL30 4LH



**Domestic, Commercial
& Industrial Installation**



Contact Ben or Ron
for free estimates and friendly advice on
01208 851962 or 07887 561037



**Dial
-a-
Ride**



- Travelling from Cardinham & Millpool to Bodmin on Mondays & Thursdays.
- £5 return.
- Pick up from 8.15am, return lunchtime.
- Eligibility: mobility difficulties/over 55.
- Wheelchair access.
- To Wadebridge on first Thursday of the month - £6 return.

- Shopping trips.
- Visiting friends.
- GP appointments etc.

**For more information
and to book call:**

01872 266886



CARDINHAM HELPLINE

I hope you have had a good summer, although the weather seems better now the evenings are drawing in.

Dates for October and November lunches are the **17th and 21st**, respectively.

Anyone from the Parish is welcome, but we ask that you contact Julia on 01208 821216 if you haven't been before. You will be most welcome.

*Kind regards,
Rosemary*



*How lucky we are to have the delicious monthly **Helpline Lunches** in Cardinham Parish Hall. September's lunch menu of beef stew & vegetables thanks to Malcolm Maynard & helpers, followed by Lorraine Pollard's yummy chocolate roulade & apple & peach crumble with custard was so tasty. Many thanks to all the volunteers who help to put this on - come & join us next month & find out for yourself- just call Julia on 01208 821216 by the Monday before to book your place. Lizzy Smart*

FORTHCOMING EVENT

**SUNDAY 20TH OCTOBER
4.30PM WITH CREAM TEA FROM 3.45PM**

AWARD-WINNING TRIO BOHEMO FROM PRAGUE
PLAYS DVORAK'S FAMOUS "DUMKY" TRIO

LAVETHAN BARN, BLISLAND, PL30 4QG
TICKET INFO 07917 261441

The best Revd Chef happily feeding the
not quite the five thousand!
by Lizzy Smart



MOUNT & WARLEGGAN EVENTS

Saturday 26th October

DRACULA

a one man show with David Mynne
£12 / head

Friday 29th November

A CHRISTMAS CAROL

with the same gentleman,
also at £12 / head.

To reserve a space tel: 07879 080407

21st November

**A CONCERT in St Bartholomew's
Church Warleggan** with members of
the

International Music School of Prussia
Cove (Price tba) Box office 01208 821551



- MOBILE LOCKSMITH
- DOMESTIC, COMMERCIAL & AUTO
- INSURANCE RATED LOCKS
- ON SITE KEY CUTTING
- UPVC MECHANISMS, PATIO, GARAGE, DIGITAL, KEYSAFES
- REMOTE & CHIPPED KEYS SUPPLIED
- FREE ESTIMATES
- PROPERTY SECURITY & MANAGEMENT

www.duchylocks.co.uk

Tel: 0800 97 888 37

Mob: 07966 654267

Cardinham Parish Hall

Available for Hire 

Cardinham Parish Hall
Church Road
Cardinham
Bodmin
Cornwall
PL30 4BN



Chairman Secretary & Bookings

Debra Best
01208
821554

Julie Best
01208
821227

www.cardinhamparishhall.weebly.com
cardinhamhall@btinternet.com

TIME TO CUT OVERHANGING HEDGES AND TREES

It's that time of year again!

After a very healthy summer's growth this year, **please can all landowners with hedges or trees on their property that are next to a public road or right of way arrange to have them cut back as soon as possible** so that users can access roads, footpaths and bridleways safely.



In particular **please ensure that visibility is not impeded at junctions, passing places and on bends.**

Two lane roads should be cleared to a minimum width of 5.5m (18ft) to maintain the free flow of traffic, and single lane roads to a minimum of 2.75m (9ft).

Where there is a verge this should be cleared back to 1.5m (5ft) for pedestrian use and to aid visibility. Main verges will be cut by Cornwall Council contractors.

Overhanging trees and bushes must be cut to a minimum height of 2.1m (7ft) over footpaths, to 2.5m (8ft) over bridleways and to 5.2m (17ft) over roads.

The responsibility to maintain your own hedges and trees applies whether you are a landowner, farmer, business owner or occupier of a residential property. If growth becomes a problem Cornwall Council can serve formal notice on the owner/occupier requiring the work to be completed in a specified time period. If this is not done they can carry it out and will recover the costs from you.

Your co-operation to make our Parish safer and look tidier over the Winter is much appreciated.

Further details can be found at <https://www.cornwall.gov.uk/media/u4aophcp/cornish-highway-hedge-leaflet.pdf>

Cardinham Parish Hall Events

POP UP PUB NIGHTS



SATURDAY 5TH OCTOBER

SATURDAY 2ND NOVEMBER

SATURDAY 7TH DECEMBER

Bar open 7pm - 10.30pm, food available from 7pm

We usually play music through our sound system at our Pub nights, but in December we try to have live music. This year we are being joined by **THE 7 BAYS UKULELES**

It's time again for our annual QUIZ NIGHT!

12th October - 7pm for 7.30pm start

Teams of up to max 6, don't worry if you're on your own, or less than 6, come along and we can make teams up.

To book please text/message or ring Deb with details.

01208 821554 or 07798 838443

Please include preference on pasty. See main poster for further details

CARDINHAM PARISH HALL FUNDING

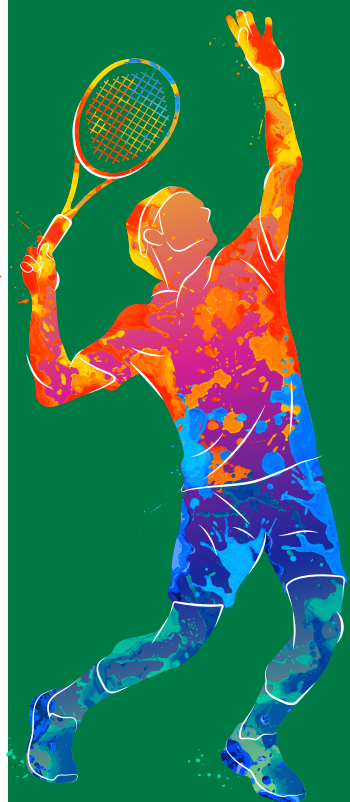
We have been fortunate to receive another grant this year from the Callybarret Wind Turbine Fund.

It will enable us to do the following:-

- Purchase the remaining kitchen units and so now have a matching kitchen.
- A fridge has been replaced with a new under counter fridge freezer.
- We have purchased new set of cutlery so no longer need to use a mismatched set.
- The Curtains in the main hall have been removed and replaced with vertical blinds, which look much smarter.

Cardinham Sports Club

www.cardinhamports.org Facebook - @cardinhamports



As autumn sets in, tennis continues to be our main focus, but we've also got some exciting events coming up. There'll be **pickleball** at the club on **Tuesday evening 1 October**, an **afternoon cycle ride along the Camel Trail** on **Sunday 6 October**, and then we'll be running our ever popular **skittles evening** at the London Inn on **Saturday 16 November**. Full details and latest updates are, as ever, on our website or call us on the phone numbers below.

As well as welcoming those wishing to hire the court on a pay-and-play basis, we are always happy to see **new members** - and if you join anytime now, from October onwards, you can enjoy free access to the court until the end of April 2025 for **60%** of our annual membership fee. That works out at £33 per adult, £54 for a couple, £63 for a family, or £9 for anyone under the age of 25 who is unemployed or in fulltime education. Note that children attending Cardinham School can join anytime at a special rate of £5 for the year.

Come and see us – you'll be made very welcome!

To find out more about the club, or to book a court, go to www.cardinhamports.org or call 01208 821409 / 07842 612989.

News from MILLPOOL METHODIST CHURCH

This time last year we were busy making poppies for our display. These will once again be attached to the porch wall. This year we are making poppies to be displayed at the entrance to the Parish Church. We have several willing helpers but would welcome anyone who would like to help with this project. The more we have the more impressive the display will be. They can be made in any medium you like. Most were knitted or crocheted. Many of us used the pattern which you will find in this magazine on the following page.

Our Harvest Festival is on Sunday 20th October. Once again we are serving lunch at 1.00pm followed by the service at 3.00pm led by Rod Harrison. You are welcome to either or both events. Please book for the lunch with Julia on 01208 821216 by Monday 14th October. Items for the Food Bank would also be gratefully received.

The Chorale were pleased to be back after a six week summer break. We will be singing at the **Harvest Festival Service**, and are awaiting confirmation of a booking at the John Betjeman Centre Wadebridge in November. We have also been asked to take part, once again, in the late night opening in Bodmin on 29th November.

One of our local preachers, Nichola Houghton, has contacts with Utange Orphanage, Mombasa, Kenya. Having watched a video telling the story behind the setting up of this orphanage we are holding a **coffee morning with bacon butties on Saturday November 16th from 10.00 – 12.00**. Nichola intends to visit the orphanage sometime over the Christmas period and will be able to personally deliver essential items needed for the children.

Finally, many congratulations to and John and Shirley as they celebrate their Golden Wedding Anniversary in October.

Services:	October 6th	Church Fellowship
	October 13th	United at Parish Church
	October 20th	Rod Harrison (Harvest Festival 3.00pm)
	October 27th	Church Fellowship
	November 3rd	Church Fellowship
	November 10th	Rev Harrod
	November 17th	United at Parish Church
	November 24th	Church Fellowship
	November 31st	Mrs Williams

FRILLY EDGED POPPY PATTERN

Cast on 120 stitches in red wool (5mm needles).

Row 1: Knit 2 together twice, purl 2 together twice, repeat to the end of the row(60 stitches).

Rows 2 - 8: Work in knit 2, purl 2 rib.

Rows 9 and 10: Join with black wool to make the poppy centre.

Row 11: Knit 2 together across row (30 stitches)

Row 12: Slip 1 stitch, purl 2 stitches together, purl slip stitch over single stitch.
Repeat to the end of the row.

To finish: Cut wool leaving a tail of about 6 inches.

Using a large sewing needle pull through the 10 stitches and secure.

Sew along the straight edges to make the poppy.



Rowantrees on
Cardinham Moor

*Thanks Jenny Cruse for
the smashing photo!*

Cardinham & District Gardening Club

September 2024



The Gardening Club was fully occupied arranging and holding the **Annual Flower & Vegetable Show on September 7th**. Our thanks go everyone who helped with getting it all together and to those who took part. It is a big undertaking but so worthwhile on the day as the entries come pouring in.

Listening to all the chat about growing and raising plants for showing and general gardening is always fun and interesting. Some come who are almost professional exhibitors from who we learn such a lot and many of us just collect or pick what looks good on the day. Having just been to *Harrogate Autumn Flower & Vegetable Show* we were as always staggered by the entries of massive blooms,

especially chrysanthemums and dahlias, not to mention onions weighing in at over 7kg and giant cabbages, carrots, beetroots, etc. Very similar conversations going on about the hard season for growing and cultivating.

Anyway, our show was a huge success and we enjoyed meeting up with old friends and new to share our common interest. Congratulations to all cup winners. You will find the list on our website <https://cardinhamgardenclub.wordpress.com/>

Our next meeting is at **Marsh Villa Garden** <https://www.marshvillagardens.co.uk/> at Par, Sunday 6th October at 1.30 pm. This is a super large garden, all pretty level and definitely worth visit. The garden was open regularly but now only by arrangement. Everyone is very welcome to join us, so do come along along. Details on our website or get in touch for details

Enjoy some dry gardening days!

Libby



Cardinham Parish Hall

12 October 2024

Booking is
essential
Debra Best
01208 821554
07798838443

Quiz Night

7pm for 7:30pm Start

Heads and tails

£7:50pp
Max of 6
person
per team

Raffle
Includes a Pasty
Licensed bar

THE CARDINHAM FLOWER AND VEGETABLE SHOW

thanks to Lizzy for the photos!



Treveddoe Farm

Warleggan



Belted Galloway beef

Farmed in a regenerative system that
encourages nature to flourish whilst
producing delicious beef

100% pasture fed

Farmed to organic principles

Local delivery or collection from the farm

To order please contact Ben & Claudi on the
details below

☎ 07825 568700

✉ treveddoefarm@outlook.com

USEFUL PHONE NUMBERS

(preceded by 01208 unless otherwise stated)

Police NON emergency		National 101
Blisland Inn, Blisland		850739
Cardinham Bellringers (Captain)	Nic Best	07747 724678
Cardinham Hall Bookings	Julie Best	821227
Cardinham School (Head)	David Jones head@cardinham.tpacademytrust.org	821326
Cornwall Councillor	Jenny Cruse cllr.jennifer.cruse@cornwall.gov.uk	07710 219465
Film Club	Debra Best 821554 Sonia Tucker 821382	Julie Best 821227 Nic Best 821459
Flowers for St. Meubred's	Libby Pidcock	821303
Friends of St. Meubred's	Loveday Sutton	821350
Gardening Club	Loveday Sutton	821350
Helpline	Gill Long / Jenny Saunter	821745 /07854 545467
London Inn, St Neot		01579 326728
Methodist Circuit Office	office@bpwccircuit.org.uk	895157
Millpool Chapel	Shirley Doran	813685
Millpool Coffee Morning	Julia Maynard	821216
Millpool Institute	John McDonald	821448
Mother & Toddler Group	Crissie Butler	07540 181416
Parish Council Chair	Julie Best cardinhamclerk@gmail.com	821227
Parish Council Clerk	Jo Wilson	01841 520796
Bodmin Team Ministry, Team Rector	Paul Holley	07470 192378
Sports Club	Les Spong	821591
St. Meubred's Focal Minister	Revd John Hereward	79078
St. Meubred's PCC Secretary	Rosemary Rowe	821225
St. Meubred's Reader	Ann Kerridge	76714
St Neot Brownies	Karen Cunningham	01579 321581
St Neot Scout Group	John Body	01579 320334
Warleggan Young Farmers	Laura Colwill lauragco@hotmail.co.uk	07913 330078

Please send corrections or additional numbers you would like to see to lizzysmart@gmail.com Tel 821101

Cardinham Bell Ringers

The Bell ringers of Cardinham Church (St Meubred's) are going through a difficult time, due to a shortage of ringers.

Our Club was most recently reformed in 2005 by some members of the Parish Council. Over time a small, committed team of 6 ringers have kept the club going. When the Parish Councillors reduced their input in 2010, we then started to struggle to keep a full team; a full team being 8 ringers as our tower has 8 Bells.



August 2006



November 2016



September 2022 – Queens Elisabeth II funeral



August 2024



You may have seen us at this year's community event in July, with our very popular teddy bear zip wire. The much needed money raised will go towards the repair and up keep of the bells ropes, which are in need of some TLC.



In an effort to keep the club going, we have changed our practice night to Thursdays at 7pm. We are a relaxed and welcoming tower that enjoys the social side as well as ringing; you will also find us at the monthly pop up pub and other community events. If you would like to try something new, have you ever thought of trying Bell ringing?

If you have an interest in having a go or would like to join our team, please feel free to send me a text on 07747724678, or just turn up on a Thursday evening.

Disclaimer

The bell ringing chamber is on the second floor, which involves going up a narrow and steep spiral staircase, so you will need to be able to navigate those to be able to ring.

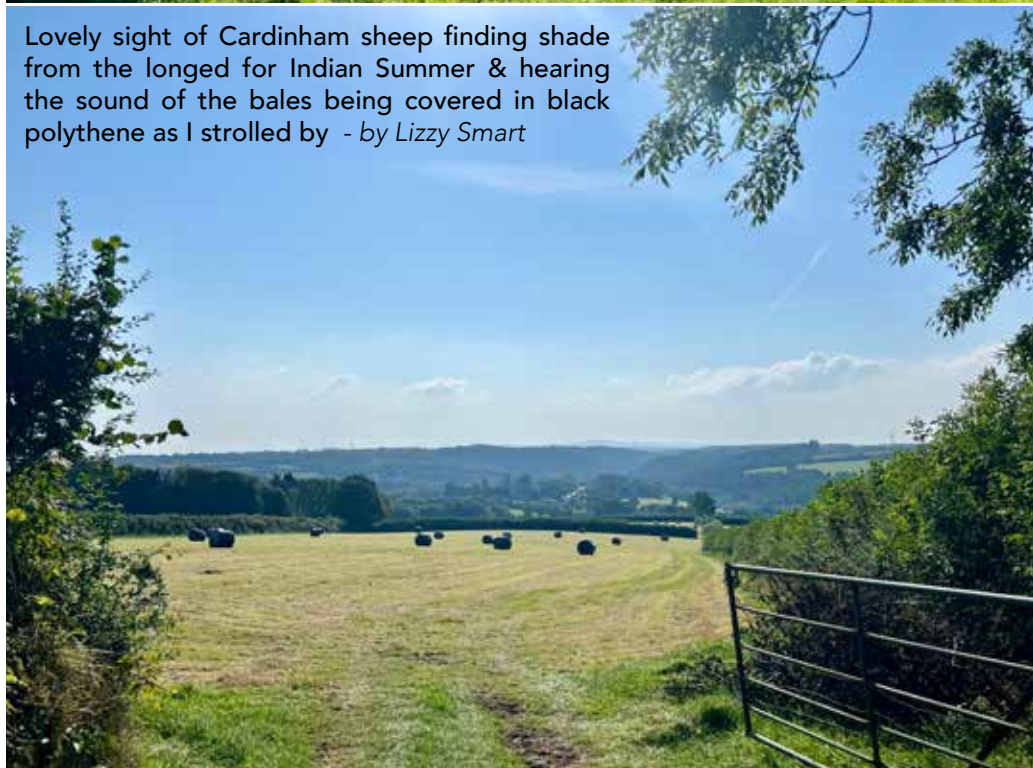
Any children under the age of 16 will need to be accompanied by an adult.

Nic Best – Cardinham Bell Ringers Tower Captain





Lovely sight of Cardinham sheep finding shade from the longed for Indian Summer & hearing the sound of the bales being covered in black polythene as I strolled by - by *Lizzy Smart*



**Commissioning of Schools Team
by Bishop Hugh
on 1st September in St Petroc's Church, Bodmin**



From left to right:
Revd John Hereward, Ann Kerridge, Lindy Margach,
Caroline Bailey & Revd. Simon Atkinson

John Hereward and Ann Kerridge have been commissioned as part of the work with schools that Bodmin Way, the Bodmin church team's social enterprise is doing. John is already a governor at Cardinham School and Ann has also worked with the School.

They are now being supported by Caroline Bailey, who from this term is employed by Bodmin Way to work with schools.

Simon Atkinson is the new CEO of Bodmin Way and is also working with Bodmin College as part of the Diocesan Flourish initiative, partnering schools and churches.

Ann Kerridge

Thanks to Lizzy for the photo.



TREMEER
CONSERVATORIES



Tremeer Conservatories have been creating bespoke conservatories and orangeries since 1991. We can construct them in either timber or UPVC and in any colour.

We can also supply windows, doors, glass balustrades and glass roofs as well as building standard or unique extensions.

To find out more information:
Call: **01208 851182 or 07798 644 293**
Email: **tremeerconstruction@gmail.com**





Matthew Keast Plumbing and Heating

All aspects of plumbing and heating undertaken
Gas, LPG

Central Heating, Bathrooms, Servicing, Certification
New Builds, Renovations

Tel: 01208 821364

Mob: 07957 727183



R. MEARS & Sons

CHIMNEY SWEEP

Vac & Brush

Cowl Fitting Service

CCTV investigation work carried out

01840 261 221 • 07737 533392

www.sweepcornwall.com

*Covering Cornwall & West
Devon*



HETAS®
Registered

N0711/30134



**ANDREW OATES
GARDEN MACHINERY
SERVICE
& REPAIRS**



New machinery on request
All leading brands
Prompt service.
Competitive rates
25 years experience
Collection & delivery
service available



**01208 821527
07791930935**

**Ground
Maintenance
Services**

**Hedging & Fencing
Stone Walling
Hedge Laying
Tree Pruning**

**Decking & Patios
Ground Clearance**

Contact:

**Greg
07887 877103**



**MARK FITCH
CHIMNEY
SWEEP**

- * BRUSH & VACUUM
- * CLEAN, RELIABLE SERVICE
- * COVERING ALL S.E. CORNWALL
- * DISCOUNT FOR MULTIPLE CHIMNEYS
- * COWLS & GUARDS FITTED
- * STOVES SERVICED



*Call
Mark on:*

**01579 350762
07773 462643**





APS
ARCHITECTURAL
DESIGN

A bespoke Architectural Design service
from inception to completion

For a free consultation
call 01208 821126

www.apsarchitecturaldesign.co.uk



www.bodminairfield.com
Want to Fly an Aeroplane?
 Treat yourself to a trial lesson
 Gift vouchers also available for the Perfect Gift!

Obtain your Private Pilot License
and other ratings.
Call us for more details

Cornwall Flying Club Ltd. 01208 821419

Dinner **31**
 Open from 1000 to 1500
 Thursday to Monday

DARCROFT GARAGE & MOT CENTRE

FOUR WINDS ~ BODMIN ~ PL30 4HH

Class 4 & 7 MOTs



Cars & Camper Vans

Light Commercial

Horse Boxes & Trailers

All Repairs Undertaken

Servicing

Diagnostics

Welding

Local Breakdown Recovery

Friendly Efficient Local Service & Advice

Tel: 01208 821238

N. J. BLANCHARD

Plant Hire & Groundworks

M: 07791 072806

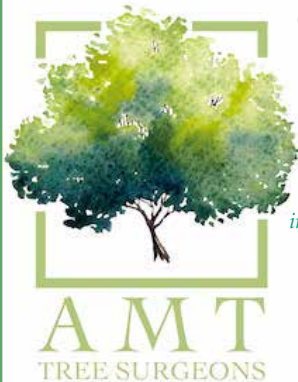
E: nick.blanchard@hotmail.co.uk

N J Blanchard specialising in:

- Drainage
- Pipe-laying
- Concreting
- Landscaping
- Site Clearance
- Scrub Clearance
- Septic Tanks
- Sand-schools & Yards

Full range of Plant machinery from mini-digger to heavy plant

For examples of our work please visit us on Facebook



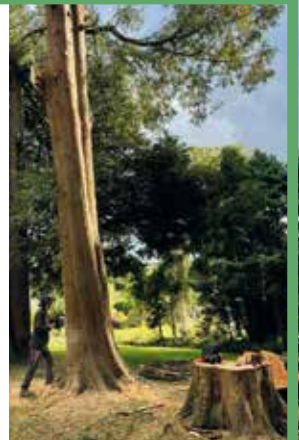
Contact: Alicia Morton-Thurtle
on 07554 890508, or email
amttreesurgeons@gmail.com

South West based, female owned
Tree Surgery business.

Covering all aspects of tree care
including, pruning, felling, fruit tree pruning
in the winter, hedge trimming, logging and
waste removal from site.

AMT Trees also offers emergency & call
out work in storms or accidents.

Located in Lanlivery.



PENINSULA

Renewable Energy



It Pays To Go Green...

It's never been a better time to invest in green energy,
and the best bit is that you get paid for it too!

**CONTACT
US NOW FOR
FREE ADVICE**

on the Feed in Tariff,
Renewable Heat Incentive
& all your sustainable
energy needs

We supply, install and advise on:

- Solar PV
- Wind Turbines
- Heat Pumps
- Solar Thermal

Tel: **01208 851962** or email: **contact@penenergy.co.uk** **www.penenergy.co.uk**



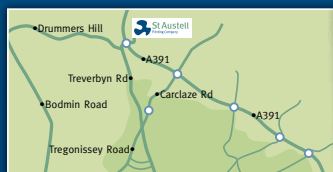
 **St Austell
Printing Company**



Your friendly printing experts

From a single sheet of photocopying, to business cards, leaflets, booklets, posters, greetings cards and so much more.

We offer printing and friendly advice on your doorstep - just park up and pop in!



St Austell Business Park | **01726 624900** | **www.SAPC.co.uk**

Whether or not...

So 'weather' you believe it not... is there any truth in the classic old wives tale that states, '*Lots of autumn berries and wild fruit, a hard winter is bound to be a-coming.*' Rubbish.



Undoubtedly, there has been an amazing crop, particularly, of rowan-berries (Mountain ash) this autumn all, I hasten to add, due to the past year's weather rather than giving us a warning signal about the oncoming winter. An awkward year, to say the least, but sunshine and warmth, at the right time, combined with plenty of moisture have resulted in a bumper crop of berries.

Early to mid-September we all revelled in the '*Indian Summer*'. Clear skies, sunshine, northern lights and HEAT. Now does THIS warn us about the winter? No, of course not but interestingly enough, why is it called an 'Indian Summer?'

Over a hundred years ago the Met Office published the definition of an Indian Summer. They described it as '*a warm, calm spell of weather occurring in the autumn, particularly the late autumn.*'

But why "Indian"? Is it an offshoot of the 'glorious past?' of the Brits' colonial rule in India...NO! It is generally accepted that the term arose from the American east coast and the native Indians enjoying fine, dry warm weather at this time of year. Suitable weather that allowed them to forage, harvest and hunt for food and stock up for winter - be it hard or a mild one! Talking of which...are we in for a 'hard' winter?

Apparently...and here I quote...the winter forecast is based '*on a mix of high pressure from the weak pacific La Niña predicting drier than usual weather for west Europe, with a weaker than usual polar vortex that pushes cold air down from the poles*'. So the current thinking is that this winter will be dry and cold.

Now...pay attention... whilst El Niño can sometimes bring warmer winters to Europe and the UK, La Niña will usually bring colder weather. The main difference is that El Niño is due to above average sea-surface temperatures in the Pacific. La Niña is due to cooling of the sea temperature. Both of which affect our weather.

So with this in mind, it certainly seems like we have reason to be optimistic about the long-range weather forecast for winter in Europe! Colder than normal....but please, if this is correct...don't shoot the messenger.

Richard Sutton

MEMORY GARDENS

Well here we are **Brenda**, the cuttings you gave me a couple of years ago are smiling in my garden, but nowhere near your 30ft. They survived the drought of last year and have happily flourished this year.

This made me think of all the gifts, cuttings and seeds I have been given since arriving in Millpool and how each plant is extra special as it reminds me of people, and surely this is the beauty of a garden. It holds special memories for us to savour.



So here is the **Silk plant that Marion Waddington** (she was a keen member of *Cardinham Gardening Club*) grew from seed collected in France and left with me when she went back 'up north' near to her granddaughter.

Then I have **geraniums** donated from **Tony** at Fletchersbridge, **musk mallow** seeds given to me by stepdaughter, **d i p t e r o c a r p u m** from **Ute** at Praze, my pond/lake is full of **irises** donated from **Cardinham Gardening Club** 8 years ago... this beside a beautiful **scarlet oak** in memory of



father in law... and so on in every corner is a memory, and isn't that the most wonderful thing to nurture that memory and remember those that gave them.

Top left: Silk plant, on right: Musk Mallow

Jenny Cruse



Left: Meadow Rue

Rigt: Irises





NEWS FROM BODMIN AIRFIELD

AEROCLUB & CORNWALL STRUT

Sorrel Layne

Counter Terrorism Awareness & The Border Force

Wednesday 16 October @ 6:30 pm - 9:00 pm

ARFUR BRYANT

Autogyros, our "Primrose" and the fun flying them!

Wednesday 20 November @ 6:30 pm - 9:00 pm



CHRISTMAS MEAL AND GENERAL KNOWLEDGE QUIZ

(WITH AN AVIATION FLAVOUR)

Christmas Quiz by Jay Gates All are welcome at our evening social events so bring your family and friends

Wednesday December 4 @ 6:30 pm - 9:30 pm

If you would like to come along and enjoy the talk, please let Pete White know directly on his contact details, 01752 406660 or 07805 805679, or call the Duty Manager on 01208 821419 on any day of the week, between 0900 and 1700, to book your place, If you would like dinner beforehand, call 01208 821419 to make a booking at AeroDine (meals from 1730). We look forward to seeing you there.



AeroDine is open five days a week. Open every day except Mondays. The **AeroDine** is run by Matt Milburn, providing creative cooking with intriguing combinations of ingredients, along with some traditional classics; these wonderfully flavored dishes are based on fresh locally sourced, seasonal produce. Vegetarians, Vegans and special dietary requirements (such as gluten or dairy free) are easily catered for, please mention when booking. Children are welcome and we offer a child's menu. Well behaved Dogs welcome. Please call: 01208 821419

CARDYNHAM CHURCH

In the last magazine I wrote about our rare 18th century font. This got me thinking - what was St Meubred's church like in the 18th century?

Many people can imagine a medieval church, if only because Victorian enthusiasts did their best to recreate a medieval vibe when restoring churches. The reformation and civil war were destructive, smashing stained glass, trashing statues and whitewashing wall paintings. We have no idea how much our church was damaged but there's no medieval stained glass and very little ornament.

So what about the 18th century? The quiet patch between mayhem and enthusiasm? Step back in time and walk into St Meubred's in the 18th century. It's cold, damp and dark, not so different from now. There was no heating. The Tudor bench pews were there but you had to pay rent for your seat. There is a much faded notice in the porch dated 1896 about re seating on condition of free use.

The only lighting came from a few candles. Evensong was early afternoon in winter, to economise on candles and allow parishioners to get home before dark. We try to keep the damp at bay by an open door. Parson Woodforde, in Norfolk, had to pay a man to periodically '*to scrape the mould from the inside walls*' of his church chancel.



The biggest changes were at each end of the church. At the west end, in the tower, was a gallery for musicians and singers. At the east end, the chancel was wood panelled, the choir stalls and altar rail are later, late 19th century and early 20th respectively.

Look at any church built in the 18th century and the pulpit takes prime spot. Maybe Cardynham had a 3 deck pulpit? Top level for sermons, middle for the parson and lower for the parish clerk. The parson literally read the service Mattins or Evensong from the Book of Common Prayer. The parish clerk gave the set responses, the congregation just listened. There were no hymns, only psalms. The only variety was the sermon, the focal point of the service. Georgian sermons lasted at least an hour sometimes much longer. There were only a few communion services at festivals like Christmas.

You can understand why the Victorians were so keen to change things!

Cornwall Councillor Jenny Cruse



At the beginning of August, I had the pleasure of attending the opening of the relocatable **MRI scanner** which is located at the excellent **Minor Injuries Unit in Bodmin**. Since being elected I have sat on the Health and Adult Social Care Overview and Scrutiny Committee, and it has been an aspiration to make **Bodmin Hospital** a Community Hub. I have always promoted the strategic importance of Bodmin Hospital to serve the growing town and surrounding area and it has been satisfying to see the Integrated Care Board support Bodmin and provide the comprehensive diagnostic centre, which means we can offer a better standard of care for our residents. The Minor Injuries Unit has proved to be a great success with a very caring and efficient system to deal with injuries, and an x-ray and bone scanner on site, which means diagnosis can be made on the spot. Having been whipped off my feet by my friends' whippet and then x-rayed and stitched and antibiotics administered all in the space of an hour I can testify to the excellent service.

The season of early morning mists is with us now with the promise of Autumn and harvest to come. I normally love this time of year, but this year I am filled with apprehension. The proposed cut to Winter fuel assistance for pensioners worries me particularly as there is to be a 10% increase in bills. There will be many pensioners who just miss the requirements for pension credit and have worked hard to save for their retirement only to find they are now penalised. I would advise any resident who is concerned to apply for pension credit on the **Pension Credit Eligibility** - GOV.UK (www.gov.uk) or to contact their local Citizens Advice either at Shire Hall or the Old Library where you will receive excellent help and advice.

Autumn is also the start of the new school year. Anxious times for parents and children alike so it was very good news to learn that Cornwall Councils' children services were rated 'Good' with 'Outstanding' features by Ofsted.

I have also been contacted by residents regarding the delay in starting the new **Primary Care Centre** in Bodmin. We have been told to expect news in September, the situation remains confidential, and I can only assure you that Cornwall Council are doing their best to get this much needed project up and running.

Please find time to enjoy the beauty of Autumn. We are so lucky to live on the edge of Bodmin Moor with so much history on our doorstep. I had a wonderful day out with my youngest grandkids sketching at Clitters Cairn, Nine Stones and Carey Tor, funded by the National Landscapes Monumental Improvements '**Drawn to the Stones**'. It was a great experience and good to learn of the work being done to preserve our ancient monuments.

Please do not hesitate to contact me if you need help with Council matters.

Jenny

Email: cllr.jennifer.cruse@cornwall.gov.uk Mobile: 07710 219465

REGULAR EVENTS

DATE	WHEN	EVENT	WHERE
Monday	7.30pm	Warleggan Young Farmers' Club	JHM
Monday	7.15pm	Millpool Chorale Practice	CRM
Tuesday	11.45-12.45pm	Pilates Mixed Ability Class	JHM
Tue (1st in month)	2.30pm	Book Club (821208)	CRM
Tue (except 3rd)	7.30pm	Bell Ringing	St. Meubred's
Tue (3rd in month)	7.30pm	Parish Council Meeting	CPH
Tue (last in month)	10.30am	Millpool Coffee Morning & Book Swap	CRM
Wed (except 3rd)	7.30pm	Bell Ringing	St. Meubred's
Wed (2nd in month)	2.30-4.30pm	Crafternoon	CRM
Wed (4th in month)	7.30pm	Warleggan History Group	JHM
Thur (1st in month)	2.30-4pm	Tea Party & Chat	CPH
Thur (3rd in month)	12.45pm	Helpline Lunch	CPH
Thur (last in month)	All day	Pensioners 10% Discount	Trago
Fri (term time only)	9.15-11.15am	Little Fawns Toddler Group	CPH
Sat (1st in month)	7.30-10.30pm	Pop Up Pub Night	CPH
Sat (last every month)	9am-3pm	Farmers Market , Mount Folly	Bodmin
Sun (1st in month)	10.45am-12	KIDZ CLUB	CRM
Sun	10.30am	Table Tennis (821409)	JHM

CRM = THE COMMUNITY ROOM, MILLPOOL METHODIST CHURCH

CPH = CARDINHAM PARISH HALL, JHM = JUBILEE HALL MOUNT

PLEASE NOTE: PLEASE CHECK IF YOU PLAN TO ATTEND ANY OF THEM.

Please check village notice boards, emails and organisers for details.

If you have an event you would like us to publicise send details to cmcmag@outlook.com