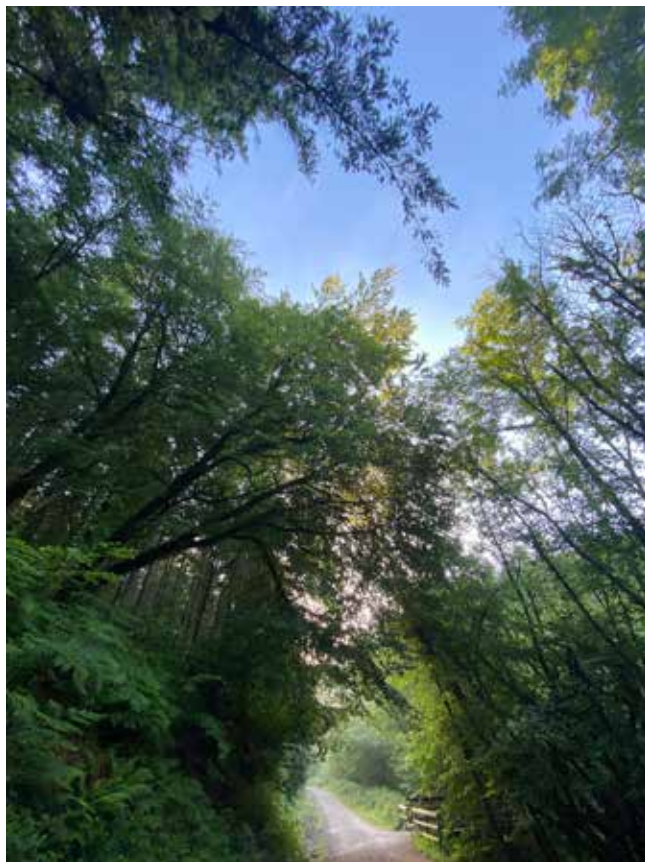


# CARDINHAM & MILLPOOL COMMUNITY MAGAZINE

AUGUST / SEPTEMBER 2024



*Early woodland walk*  
by Polly Airey

ISSUE 111

Single Issue Price £1.25

# CONTACTS

## Editorial Team

Lizzy Smart: 821101  
lizzysmart@gmail.com  
Peter Claridge  
monnsoon90@yahoo.co.uk

## Treasurer & Advertising

Simon Smart: 821101  
simonseansmart@gmail.com

## Distribution

Julia Maynard: 821216  
juliamaynard1949@gmail.com

## Design, Print & Production

**NEW DETAILS: St Austell Printing Co.**  
01726 624900 (ext. 109)  
Email: polly.airey@sapc.co.uk

# CONTRIBUTIONS

## NEW DETAILS!

Please send your contributions to  
**polly.airey@sapc.co.uk**

- a Microsoft Word file is best.

Photos should be sent in  
uncompressed **jpeg** format.

We accept files and advertisements  
as high res **PDFs** (preferred).

If typed or handwritten, please send  
it to one of the Editors.

We select articles based on local  
interest and reserve the right to  
edit for clarity and length.

---

## Copy Date for October / November 2024 Issue

**Typed/Handwritten: MONDAY 16<sup>TH</sup> SEPT**

**Deadline by Email: THURSDAY 19<sup>TH</sup> SEPT**

---

## Advertising Rates & Sizes

Advertising is free for all local community and charity events.

All commercial advertising and events will be charged: 1/4 - £24pa. 1/3 page - £36pa. 1/2 page - £60pa. Whole page - £120pa. There is a minimum charge of £20 for advertising. One-off page advertorials - £25

## Photographs & Scanning

Please email an original JPG with no compression or reduction, PDF or TIFF to  
cmcmag@outlook.com

Special photographs, drawings, illustrations, etc can be scanned.

Please contact cmcmag@outlook.com

**For required format & any queries** please contact **polly.airey@sapc.co.uk**

---

## Need an extra copy?

**Subscriptions £5pa (postage £11pa)**

**Single Issue £1.25 Contact Julia on 821216**

---

The opinions expressed in articles in this magazine are those of the authors, and are not attributable to any member of the magazine production team.

# FROM THE EDITOR

Hello and welcome to the August - September issue!

As we write this the children have just broken up for the school summer holidays and the heavens have been giving our gardens and crops a fair old soaking - we can all agree that we would now like Mr Sun to put his hat on and come out to play, please. We are expecting wall to wall sunshine. We have written to 'im upstairs and have asked very nicely. Let's hope it works...

This issue has heaps to read - Cardinham Gardening Club are hosting their annual show on 7th September - please see the centre spread for full programme and classes. Richard Sutton asks 'What is it' on page 28 (we will leave you to find out what it is! And On page 31 we find out about poems being dropped over the Somme, thanks to the amazing efforts of Bodmin Airfield and Bridge Schools. Incredibly inspiring.

With best wishes to you all,

*Lizzy, Polly, Simon, Marc, Peter and Julia*



**Luxury, peaceful, lakeside Shepherd Hut accommodation available to book now!**

**Featuring Smart TV, USB ports & Wi-fi, power shower, copper basin, espresso machine, leather sofa, wood burner, king size bed, barbecue, outdoor furniture, fire-pit, private lake use with boat & complete solitude.**

**Couples only, pet free**

**Contact THE GOOSE NEST**

**01208 821788 / 07809 396975**

**[the\\_goose\\_nest@outlook.com](mailto:the_goose_nest@outlook.com)**

# ST. MEUBRED'S CHURCH UPDATE

## Services for St Meubred's, Cardinham - August & September

August 4 <sup>th</sup>	9.30 am	Holy Communion
August 11 <sup>th</sup>	11 am	Joint Service with Millpool Methodist Church in Cardinham Parish Hall
August 18 <sup>th</sup>	9.30 am	Holy Communion
August 25 <sup>th</sup>	9.30 am	Morning Prayer
Sept 1 <sup>st</sup>	9.30 am	Holy Communion
Sept 8 <sup>th</sup>	11 am	Joint Service with Millpool Methodist Church in Millpool Church
Sept 15 <sup>th</sup>	9.30 am	Holy Communion
Sept 22 <sup>nd</sup>	9.30 am	Morning Prayer
Sept 29 <sup>th</sup>	10 am	Team Service in St Petroc's Church, Bodmin

**Books for sale or swap in St Meubred's Church:** If you have books or DVDs you are happy to donate to our library for others to read or watch, please leave them on the bookshelf as you enter the church. Do help yourselves to either.

**Harvest Festival:** date to follow

## Tea Party & Chat

**August 4th and September 5th  
from 2.30 pm.**

Join us for a cuppa, cake and chat,  
everyone warmly welcome.



Wild lilies  
by Polly Airey







# BODMIN TEAM MINISTRY

[www.bodminteam.church](http://www.bodminteam.church)

***Dear Friends,***

One of the clear commands of Scripture is that we should pray for our leaders and those in authority over us. In churches up and down the country we pray for our government, the Royal family and the leaders of the nations. But what do we pray for them? The traditional prayer used to ask that under their authority we might be “godly and quietly governed” which is a good starting point.

One of the things I pray for our leaders is that they might always have a heart for the poor and promote policies that will help those most in need. At the Foodbank where I volunteer we have been focussing heavily on trying to help people address the underlying problems which have lead to them requiring emergency food aid. We work in close collaboration with **Citizen's Advice Bureau** and **Christians Against Poverty** and a number of our volunteers have undergone training to help people navigate the benefits system.

It seems that no matter what we do the answers to many of these issues lie with those in authority. Tackling poverty both locally and globally is a political issue and we should pray that those in authority over us should work together for a fairer world.

As our new government starts and as the voters in America go to the polls in a few months time let us pray for all in authority that they may act with justice and integrity and promote the needs of the poor.

***Blessings,***

***John Hereward***





## Cardinham School's Poetry Festival

On Thursday 4th July, St. Meubred's Church was filled with the vibrant sounds of poetry as we celebrated our first Poetry Festival! What an incredible afternoon, full of creativity, inspiration, and joy! From the youngest nursery children to our oldest Year 6 pupils, everyone brought their A-game! A massive thank you to Rob Pudner from Entertainingly Different for hosting the event. This event truly brought us all together as a community. We can't wait to welcome the Poetry Festival back again next year and would invite anyone in the community to come and join us!

## Year 3/4 Beach Trip Afternoon Update

What an AMAZING day Year 3/4 had at Great Western Beach! The beach trip was a huge success and we couldn't be prouder of our incredible children! From start to finish, their effort, determination and behaviour were nothing short of impeccable! The instructor even commented saying, "It makes our job easy and fun when the children are as well-behaved as this!" Parents, you too should be extremely proud of your children! They made the day unforgettable for everyone involved!



## Music Showcase

We are still buzzing with excitement from our recent performance at Hall for Cornwall! Our talented students truly shone as they took the stage to present their original composition, inspired by Igor Stravinsky's 'The Firebird'. Their innovative twist on

Stravinsky's classic captivated the audience and showcased the incredible creativity and dedication of our young musicians. A huge THANK YOU to everyone who supported us and joined us for this unforgettable evening. Your enthusiasm and encouragement made the night even more special.

# SUBSCRIPTION PAYMENTS

Subs. to the magazine are **£5pa**, plus any donation you would like to make. **Subs run from January - January.**

Please pay your distributor as usual, or if you prefer, by Bank Transfer.

The magazine bank account details to use are:

**Sort Code: 30-97-28 Account No.: 02314833**

**Account Name: Cardinham and Millpool Community Magazine**

Please add your name/address as reference

Don't forget postage, if applicable, £11pa

Thank you for paying promptly



The Works,  
South Penquite,  
Blisland, Bodmin,  
PL30 4LH



**Domestic, Commercial  
& Industrial Installation**



Contact Ben or Ron  
for free estimates and friendly advice on  
01208 851962 or 07887 561037



**Dial  
-a-  
Ride**



- Travelling from Cardinham & Millpool to Bodmin on Mondays & Thursdays.
- £5 return.
- Pick up from 8.15am, return lunchtime.
- Eligibility: mobility difficulties/over 55.
- Wheelchair access.
- To Wadebridge on first Thursday of the month - £6 return.

- Shopping trips.
- Visiting friends.
- GP appointments etc.

**For more information  
and to book call:**

**01872 266886**



## CARDINHAM HELPLINE



This is a reminder that there is no lunch in August. It gives our cooks a well-deserved break, and with many people on holiday or hopefully enjoying sunny days, our numbers are often low at this time of year. I take this opportunity to say a huge **'Thank you'** to all our volunteers, cooks, and coordinators for the wonderful service they provide throughout the year. Nothing would happen without you. **Our September lunch is on 19th at 12.45pm** and of course our car lift service is available every month including August.

We look forward to seeing you again in September, meanwhile enjoy summer and with any luck some better weather.

*Kind regards, Rosemary*



Cardinham & District  
Gardening Club

The Cardinham Gardening Club enjoy their Social evening with pasties and cider, thanks to Susan Edward-Collins

*Thanks Loveday for the photos.*





To commemorate the 80th Anniversary of D-Day, the Lighting of the Beacon up on Millpool Range, on 6th June 2024

*Huge thanks go to Steve Best and Greg Tucker for setting up the event.*

*And thanks also to Jenny Saunter for sharing your photos with us.*



- MOBILE LOCKSMITH
- DOMESTIC, COMMERCIAL & AUTO
- INSURANCE RATED LOCKS
- ON SITE KEY CUTTING
- UPVC MECHANISMS, PATIO, GARAGE, DIGITAL, KEYSAFES
- REMOTE & CHIPPED KEYS SUPPLIED
- FREE ESTIMATES
- PROPERTY SECURITY & MANAGEMENT

[www.duchylocks.co.uk](http://www.duchylocks.co.uk)

Tel: 0800 97 888 37

Mob: 07966 654267

## Cardinham Parish Hall

Available for Hire



Cardinham Parish Hall  
Church Road  
Cardinham  
Bodmin  
Cornwall  
PL30 4BN



Chairman Secretary & Bookings

Debra Best  
01208  
821554

Julie Best  
01208  
821227

[www.cardinhamparishhall.weebly.com](http://www.cardinhamparishhall.weebly.com)  
[cardinhamhall@btinternet.com](mailto:cardinhamhall@btinternet.com)



# THE SCARECROW COMPETITION

28 Scarecrows spotted around the village. All amazing and so lovely to see them scattered around, we have some very creative people around the village. The judges narrowed down to a final 8 and all of these could have been a winner!

*A special mention to:*

**THE REV SCARE CROWE ON CARDINHAM CHURCH WALL**  
**THE FINAL STRAW, CONSTRUCTION WORKERS, CHURCH STEPS**  
**THE VERY ECO GLAM LADY AT ST MEUBREDS**  
**THE LAST MARATHON RUNNER AT LANGSMILL**  
**COUNCIL WORKER 'POTHOLES FIXED DRECKLY' AT GLYNWOOD**

## WINNER!

**THE ONE ON THE GATE AT  
THE OLD RECTORY**  
- Very creative and very  
difficult to have it stay on the  
gate upright  
- Well done Jessica!

## SECOND PLACE

**'SIR BEASTIE' AT DEVIOCK**  
- Lovely use of an old rusty paint  
pot for the head, very large and  
impressive

## THIRD PLACE

**SCHOOL CHILDREN AT THE  
CROSSROADS**  
- Love how this scares the traffic  
and not crows, and forces you to  
slow down - a great message here.

[ Ed. Amazing effort everyone! Maybe  
a yearly event? Was great to see!]



## Cardinham Parish Hall Events

# POP UP PUB NIGHTS

**SATURDAY 10TH AUGUST WITH A BBQ**

**SATURDAY 7TH SEPTEMBER**



Pop Up Pubs will continue 1st Saturday of the month with food being served at each. During the Summer months we will be having a BBQ with the pub evenings. Dates etc will be advertised in the newsletter, Facebook & on notices.

Thank you to everyone who came along on Saturday to join in the **COMMUNITY EVENT**. 7 local groups took part, they were:

Cardinham Gardening Club  
Cardinham Sports Club  
St Meubreds Church  
Millpool Methodist Church  
Cardinham School  
Cardinham Bellringers  
Cardinham Parish Hall

All proceeds were divided between 6 of the groups £77 each.

The Gardening Club took part but donated their share back into the pot thank you x

It was great to see the Scarecrows around the village, 28 in total.

Thank you to Carole Wilkie for being the judge, a tricky job to make the decision from so many.

# Cardinham Sports Club

[www.cardinhamports.org](http://www.cardinhamports.org) Facebook - @cardinhamports



The sun is (sometimes!) shining. More people are discovering our tennis court, with the numbers of pay-and-play bookings and of memberships both rising. Plus Cardinham School is making good use of the court too, through its affiliate membership.

Through our 'pay-and-play' scheme, non-members can hire the court (up to 5.30 pm) for just £7.50 per hour (£10 for 2 hours), while membership means you can play anytime. Note that children attending Cardinham School can join as members at a heavily discounted rate, just £5 for the year.

It's not just tennis, though - we hope soon to organise a cycle ride, and on Sunday 8th September we have our ever popular croquet afternoon at St Neot Cricket Field - see posters and website for details. No experience needed.

We are a small club, and it's through the dedication of our members and committee that we keep this wonderful facility available for all to use. Thanks go to everyone involved, whether it's helping maintain the court, cleaning the clubhouse, mowing the grass or trimming the hedges. And a big thanks go to Viv and Steve who installed a brilliant seated Andy Murray by the gate, as part of the village's scarecrow competition. You did us proud!



# News from MILLPOOL METHODIST CHURCH

What a great evening we had celebrating 30 years of the **Millpool Chorale**. **Wadebridge Male Voice Choir** took part in the concert, and between us we produced a varied programme of music. John was M.C. for the evening and helped to fill in the time taken for two choirs to change places.

We were delighted to be able to welcome Rev Peter Whatton back to Millpool. He was our minister thirty years ago and encouraged us to form a ladies choir and said how pleased he was that we still enjoyed singing together.

The finale of the evening was when the two choirs joined together for the first time and gave an enthusiastic rendition of The Gospel Medley.



*Both choirs sing together to round off a wonderful evening of popular songs*  
Photo Lizzy Smart

Special thanks were made to our accompanist Rose who has been playing for us for at least 25 years, and Conductor Jenny who is a founder member of the choir.

The evening ended with a lovely Cornish Supper organised by Shirley.

Our Sunday services continue at 11.00 am, with the second Sunday of the month being a United Service with St Meubred's meeting alternately in the Parish Hall and Millpool Chapel. These services are proving to be popular.

## Services for August:

**August 4th**  
**August 11th**  
**August 18th**  
**August 25th**

**Rev Lawson-Wills**  
**United Service in the Parish Hall**  
**Church Fellowship**  
**Church Fellowship**

# Cardinham & District Gardening Club

What do the following have in common? A working water mill, a train station called 'Wishing Well Halt', a property recently featured on Channel 4's 'Grand Designs' and, possibly, the narrowest approach roads in the county!

Would it surprise you to know that these all featured in recent visits to gardens by the club.

Back in June the club ventured across the Tamar to **Bridgerule** and the gardens and mill at **Bridge Mill**. An organic 'cottage-style' garden around the restored working water mill. Herb garden, a very productive fruit and vegetable garden, woodland, wildflower meadows and water garden behind mill and the 'juvenile' river Tamar. Bridge Mill is a County Wildlife Site and a Key Devon Dragonfly site. The site is open for free school visits so is child and wildlife friendly!

In the middle of July club members drove (incidentally they could have taken the Liskeard/Looe train jumping off at Wishing Well Halt). First visit was **Higher Locrenton** near St Keyne. A true plantsman garden of 2 acres on a hillside overlooking the East Looe river valley. It has been developed over 30 years with a wide variety of plants, trees, shrubs and vivid perennials. This garden is open with the National Garden Scheme and is well worth a visit.

The club then 'squeezed' their way down a lane to the bottom of the valley to **Lametton Mill**. This features a newly planted garden around the ancient restored mill house. Young specimen trees, herbaceous borders, roses, a forest of 'verbena bonariensis' all designed around



different levels on a sloping site. The garden has an imposing backdrop of the 900 year old mill that has been converted into a dwelling. Tea and great cakes were available and enjoyed on the various sitting areas.



A few years ago, the current owners, saw the wreck of the mill and fell in love with it. '**Grand Designs**' featured the painstaking restoration. This proved to be quite a task. The building was all but beyond help...



but loving care, dedication, hard work by builders and the owners, saw the amazing building come to life. Again this is featured in the National Garden Scheme.

(By the time you read this we will have had our social evening on July 19th ,Don't forget our **Flower/Veg Show** on Sept 7th...look online for details)

**Richard Sutton**



## THANK YOU!

Thank you everyone who came to celebrate Nick Blanchard's 40th Birthday, they requested no gifts - instead guests donated a whopping £562.00 to **Cornwall Blood Bikes** - an amazing sum! And without Cornwall Blood Bikes, Nick would not be here!



A lovely Lily bursting into flower in a Cardinham Pond

Thanks Caron Jenner for your pretty pic!

Young foals on Treslea

Thanks Lizzy for the sweet photo!





## *Is yours as big as this?!*

Here's a picture of my Tree Mallow (in July). If anyone had one of my cuttings a couple of years ago I would love to hear if they can beat approx 30ft and still going up. Let's hope that we don't get more strong winds like last year when the lot hit the deck.

Brenda Smith



### **Treveddoe Farm** Warleggan



Belted Galloway beef  
Farmed in a regenerative system that  
encourages nature to flourish whilst  
producing delicious beef  
100% pasture fed

Farmed to organic principles  
Local delivery or collection from the farm

To order please contact Ben & Claudi on the  
details below

☎ 07825 568700

✉ [treveddoefarm@outlook.com](mailto:treveddoefarm@outlook.com)

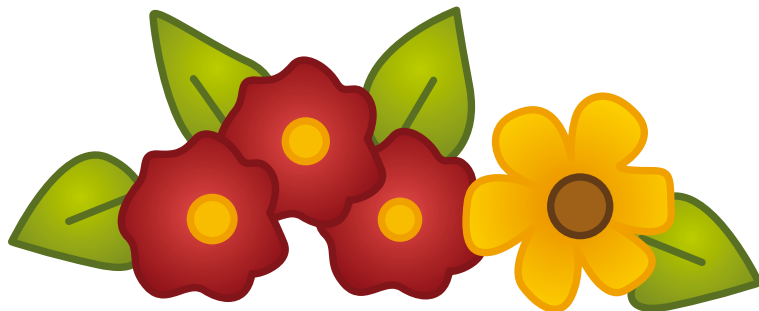
# USEFUL PHONE NUMBERS

(preceded by 01208 unless otherwise stated)

Police NON emergency		National 101
Blisland Inn, Blisland		850739
Cardinham Bellringers (Captain)	Nic Best	07747 724678
Cardinham Hall Bookings	Julie Best	821227
Cardinham School (Head)	David Jones head@cardinham.tpacademytrust.org	821326
Cornwall Councillor	Jenny Cruse cllr.jennifer.cruse@cornwall.gov.uk	07710 219465
Film Club	Debra Best 821554 Sonia Tucker 821382	Julie Best 821227 Nic Best 821459
Flowers for St. Meubred's	Libby Pidcock	821303
Friends of St. Meubred's	Loveday Sutton	821350
Gardening Club	Loveday Sutton	821350
Helpline	Gill Long / Jenny Saunter	821745 /07854 545467
London Inn, St Neot		01579 326728
Methodist Circuit Office	office@bpwccircuit.org.uk	895157
Millpool Chapel	Shirley Doran	813685
Millpool Coffee Morning	Julia Maynard	821216
Millpool Institute/Snooker Club	John McDonald	821448
Mother & Toddler Group	Crissie Butler	07540 181416
Parish Council Chair	Julie Best cardinhamclerk@gmail.com	821227
Parish Council Clerk	Jo Wilson	01841 520796
Bodmin Team Ministry, Team Rector	Paul Holley	07470 192378
Sports Club	Les Spong	821591
St. Meubred's Focal Minister	Revd John Hereward	79078
St. Meubred's PCC Secretary	Rosemary Rowe	821225
St. Meubred's Reader	Ann Kerridge	76714
St Neot Brownies	Karen Cunningham	01579 321581
St Neot Scout Group	John Body	01579 320334
Warleggan Young Farmers	Laura Colwill lauragco@hotmail.co.uk	07913 330078

Please send corrections or additional numbers you would like to see to [lizzysmart@gmail.com](mailto:lizzysmart@gmail.com) Tel 821101

# CARDINHAM 46<sup>th</sup> ANNUAL FLOWER & VEGETABLE SHOW

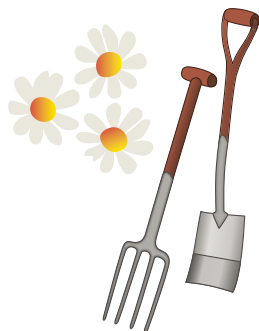


Organised by  
*The Cardinham & District Gardening Club*

**2pm - 3.30pm**  
**Saturday 7th September 2024**

**Homemade Cakes, Teas,  
Raffle & Plant Stall**

**Adults £1 Children Free**





# VEGETABLES & FRUIT

CLASS (note: one entry per competitor per class)

- 1 4 Potatoes, single variety
- 2 Longest Runner Bean
- 3 1 Squash, any variety
- 4 6 Shallots, white
- 5 3 Onions, white
- 6 1 Garlic, bulb
- 7 4 Carrots
- 8 6 French Beans
- 9 3 Beetroots
- 10 6 Runner Beans
- 11 6 Tomatoes, salad
- 12 4 Stems of Mixed Herbs
- 13 6 Cherry or Plum Tomatoes
- 14 1 Cucumber
- 15 4 Courgettes
- 16 4 Vegetables, assorted
- 17 4 Sticks of Rhubarb
- 18 4 Cooking Apples
- 19 4 Dessert Apples
- 20 12 Soft Fruit / Berries



# FLOWERS & PLANTS

CLASS (note: one entry per competitor per class)

- 21 5 assorted Seed Heads (can include grasses) in a vase
- 22 3 Dahlias, own choice
- 23 Single Rose
- 24 1 Hydrangea Head
- 25 5 Stems of Annuals
- 26 5 Stems of assorted Herbaceous Perennials
- 27 5 Stems of assorted Foliage
- 28 Stem of Fuchsia
- 29 A specimen Bloom
- 30 Container of Cacti and/or Succulents



# FLORAL ART OPEN



## **CLASS 31 Dish of Floating Flowers**

Overall width not exceeding 30cm/12" wide

NB Competitors must bring exhibits to the Hall complete.

Lack of space makes it impossible to allow entries to be constructed in the Hall.

## **YOUNG PEOPLE'S COMPETITIONS**

### **CLASS 32 Picture, card, bookmark or other item of choice decorated with pressed flowers. Max size A5.**

For competitors Nursery - KS1 (Reception, Yrs 1 and 2)

### **CLASS 33 as above**

For competitors KS2 (Yrs 3, 4, 5 and 6)

## **OPEN FUN CLASS**

### **CLASS 34 Garden in an Egg Box**

For competitors of all ages!



## **THE SARAH HOLMES CUP**

### **CLASS 35 A Celebration of Cosmos**

5 Stems of Cosmos displayed in a vase

## **COOKERY COMPETITION**

### **CLASS 36 Men Baking Only - 7" Shortbread Round**

### **CLASS 36A Ladies Baking Only - 7" Victoria Jam Sponge**

### **CLASS 37 Jar of Homemade Jam**

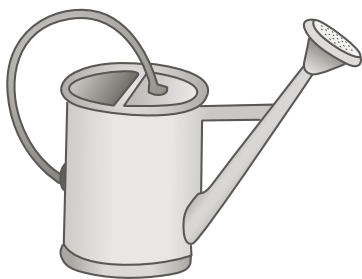
### **CLASS 38 Jar of Homemade Chutney**

### **CLASS 39 Jar of Homemade Jelly**

### **CLASS 40 4 Butterfly Buns**

For competitors aged 15 and under, who have not yet reached their 16th birthday by the day of the Show. Minimal parental help please!

To follow recipes for classes 36, 36A and 40 - please see website  
<https://www.cardinhamgardenclub.wordpress.com/flower-show>



## SHOW RULES

1. No Entry Fees
2. Entries must be brought to the Hall between 9.30am - 11.30am on the morning of the Show.
3. No competitor may make more than one entry per class.
4. Cardboard plates will be provided and

must be used in the vegetable classes.

5. Vases and containers must be provided by competitors in the flower classes.
6. Entries will be on show from 2pm - 3.30pm. Please remove all entries by 4pm. Prize giving is at 3.15pm.
7. The Gardening Club will not be responsible for any loss or damage.
8. The judges' decision is final.
9. Entries in classes 1 - 30 & 35 must have been grown by the exhibitor.
10. Entries in class 30 must have been owned by the exhibitor for at least 9 months.
11. The Hall will be closed between 11.30am - 2pm whilst judging is in progress.

## PRIZE CARDS, POINTS & CUPS

Points will be awarded as follows: 5 for 1st, 3 for 2nd and 1 for 3rd.

Cups will be awarded to be held for 1 year, as follows:

PEARNS Cup  
BRADLEY SNOW Cup  
SNOW Cup  
KESTELL Cup  
HUTCHISON Cup  
SHEILA WORDEN Cup  
SLEEP Cup  
WALTER BROWN Cup  
MARGARET BATE Cup

Most points in Vegetable Classes 1 - 20  
Best Vegetable & Fruit Exhibit in Classes 1 - 20  
Best entry 4 Assorted Vegetables Class 16  
Most points Flowers & Plants Classes 21 - 30  
Best Floral Art Exhibit Class 31  
Best Men Only Baking Class 36  
Most points won by a Gardening Club member  
Best Entry in Young People Class 32 KS1 (yrs 1 & 2)  
Best entry in Young People Class 33 KS2 (yrs 3, 4, 5 & 6)  
Best entry in Fun Class 34  
Best entry in Class 35

WI Cup  
SARAH HOLMES Cup

First prize winners in Classes 32, 33, & 40 will be awarded a rosette



**TREMEER**  
CONSERVATORIES



Tremeer Conservatories have been creating bespoke conservatories and orangeries since 1991. We can construct them in either timber or UPVC and in any colour.

We can also supply windows, doors, glass balustrades and glass roofs as well as building standard or unique extensions.


To find out more information:  
Call: **01208 851182 or 07798 644 293**  
Email: **[tremeerconstruction@gmail.com](mailto:tremeerconstruction@gmail.com)**





## Matthew Keast Plumbing and Heating

All aspects of plumbing and heating undertaken  
Gas, LPG



Central Heating, Bathrooms, Servicing, Certification  
New Builds, Renovations

Tel: 01208 821364

Mob: 07957 727183



## PENINSULA



Renewable Energy

## It Pays To Go Green...

It's never been a better time to invest in green energy,  
and the best bit is that you get paid for it too!



**CONTACT  
US NOW FOR  
FREE ADVICE**

on the Feed in Tariff,  
Renewable Heat Incentive  
& all your sustainable  
energy needs

### We supply, install and advise on:

- Solar PV
- Wind Turbines
- Heat Pumps
- Solar Thermal

Tel: **01208 851962** or email: **contact@penenergy.co.uk** [www.penenergy.co.uk](http://www.penenergy.co.uk)





**ANDREW OATES  
GARDEN MACHINERY**

**SERVICE  
& REPAIRS**



New machinery on request  
All leading brands  
Prompt service.  
Competitive rates  
25 years experience  
Collection & delivery  
service available



**01208 821527  
07791930935**

**Ground  
Maintenance  
Services**

**Hedging & Fencing  
Stone Walling  
Hedge Laying  
Tree Pruning**

**Decking & Patios  
Ground Clearance**

**Contact:**

Greg  
07887 877103  
01208 821687



Dave  
07779 096331  
01208 821318

**MARK FITCH  
CHIMNEY  
SWEEP**

- \* BRUSH & VACUUM
- \* CLEAN, RELIABLE SERVICE
- \* COVERING ALL S.E. CORNWALL
- \* DISCOUNT FOR MULTIPLE CHIMNEYS
- \* COWLS & GUARDS FITTED
- \* STOVES SERVICED



*Call  
Mark on:*

**01579 350762  
07773 462643**





**APS**  
ARCHITECTURAL  
DESIGN

A bespoke Architectural Design service  
from inception to completion

For a free consultation  
call 01208 821126  
[www.apsarchitecturaldesign.co.uk](http://www.apsarchitecturaldesign.co.uk)



[www.bodminairfield.com](http://www.bodminairfield.com)  
**Want to Fly an Aeroplane?**  
Treat yourself to a trial lesson  
Gift vouchers also available for the Perfect Gift!

Obtain your Private Pilot License  
and other ratings.  
Call us for more details

**Cornwall Flying Club Ltd. 01208 821419**

*Dinner* **31**  
Open from 1000 to 1500  
Thursday to Monday

# DARCROFT GARAGE & MOT CENTRE

FOUR WINDS ~ BODMIN ~ PL30 4HH

Class 4 & 7 MOTs



Cars & Camper Vans

Light Commercials

Horse Boxes & Trailers

All Repairs Undertaken

Servicing

Diagnostics

Welding

Local Breakdown Recovery

Friendly Efficient Local Service & Advice

**Tel: 01208 821238**

# N. J. BLANCHARD

Plant Hire & Groundworks

**M: 07791 072806**

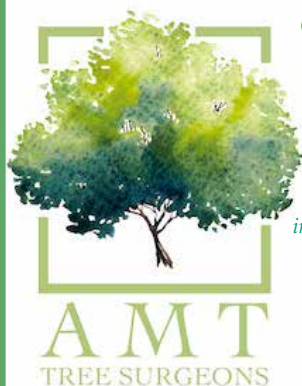
**E: [nick.blanchard@hotmail.co.uk](mailto:nick.blanchard@hotmail.co.uk)**

## N J Blanchard specialising in:

- Drainage
- Pipe-laying
- Concreting
- Landscaping
- Site Clearance
- Scrub Clearance
- Septic Tanks
- Sand-schools & Yards

**Full range of Plant machinery from mini-digger to heavy plant**

For examples of our work please visit us on Facebook



**Contact: Alicia Morton-Thurtle**  
on 07554 890508, or email  
[amttreesurgeons@gmail.com](mailto:amttreesurgeons@gmail.com)

**South West based, female owned  
Tree Surgery business.**

**Covering all aspects of tree care**  
*including, pruning, felling, fruit tree pruning  
in the winter, hedge trimming, logging and  
waste removal from site.*

AMT Trees also offers emergency & call  
out work in storms or accidents.  
Located in Lanlivery.



## Dates for your diary - MUSIC AT LAVETHAN

Sunday 11th August 2-5pm Lavethan, Blisland

Open Garden for Children's Hopsice SouthWest

Sunday 11th August 7pm, Lavethan Barn, Blisland

Queen Gwendolen's Spell - music inspired by the natural world  
from internationally renowned violinist Jacqueline Shave  
(ticket info 0791 726 1441)



# R. MEARS & Sons

## CHIMNEY SWEEP

*Vac & Brush*

Cowl Fitting Service

CCTV investigation work carried out

01840 261 221 • 07737 533392

[www.sweepcornwall.com](http://www.sweepcornwall.com)

*Covering Cornwall & West*

*Devon*

N0711/30134



HETAS®  
Registered



*What lovely Summer weather we're having!*

(Pic taken by Lizzy from Treslea - IN JULY!)





# So what is it?

Stretches a total of 18 miles from Wenford, near St Breward, to Padstow and... allegedly one of the most used trails in the UK. From Wenford it follows the river Camel down to the estuary between Wadebridge and Padstow. Following the route of a disused railway... which in its heyday must have been one of the most picturesque routes in the land. Of course I'm talking about the **Camel Trail**.

A *'shared space'* so the signs say dotted along the route. It has to share its level, well maintained route with walkers, runners, dog walkers (some on leads... that is the dogs), cyclists and scooters. What could possibly go wrong? *'Ahem'*

I am a volunteer for Sustrans... the cycle network organisation, and I am responsible for part of route 32 that runs from the Borough Arms, at Dunmere to *'quiet Padstow.'* The trail is owned and maintained by the landowner... Cornwall Council... but Sustrans is responsible for signage, etc, along the route and reporting any problems along the trail to the landowner.

So, every so often, I get on the bike and drift away from Dunmere, past Boscarne junction, the excellent tea rooms at Nanstallon... past the vineyard, Grogley Halt then Polbrock, past the *'Shooting Range'* halt and into Wadebridge. There, bikers have to negotiate traffic and three roundabouts before reaching the trail again by the large bike hire, and then 5 miles later we arrive at Padstow. This section from Wadebridge to Padstow is the most used and it does get congested during the summer months but... look at the view... the river opens into the estuary and, from a distant, the town of Padstow shimmers into view. Over the distinctive girder rail bridge and half a mile later, a mass of personalised number plates in the car park, smell of fish & chips and people greet the wary biker. We have arrived at Padstow.

So what could possibly go wrong? In the past I have reported fallen trees, picked up very little litter, cleaned some graffiti off signs, reported vandalised signs, reported a mega slippage where the trail *'wants'* to join the river 30' below, broken gates and fences... oh yes, and have been ridden into by a *'mass of approaching bikes'*!. When really busy there is a certain amount of grief shared between pedestrians, horse riders and bikers shooting past without a 'ting' from their bell!!! *'Bell... on a bike???'* It gets quite lively at times. But what a route!

According to Trip Advisor, the Wadebridge to Padstow is the most used section. But other reviews remarked that from Wadebridge towards Bodmin there is *'nothing'* to see. OK forget the river and forget the otters, the kingfishers. Near the northern end of the trail a few yards from the excellent Snails Pace café, is the longest commercial premises in Europe...the clay dries at Wenford.

So it's all fun, gives me exercise and a reason to get out on the bike...you should try it sometime.

**Richard Sutton**



Richard & Loveday  
Sutton opened  
their pretty garden  
on Friday 19th  
July to members  
of Cardinham &  
District Garden Club



*below left:*  
The stream fed  
Haygrove Farm  
nearby.



Trish & John  
Humphries opened  
their garden on  
19th July as well,  
to members of  
Cardinham & District  
Gardening Club

*Thanks to Lizzy and  
Loveday for the pics*



## News

# Poems dropped from WWII plane over Somme

STAFF REPORTER

ON Monday, July 1, a unique event took place in France; a World War II plane scattered poems, written by the children of Bridge Schools in Bodmin, over The Somme.

The poems, based on World War I, were written onto special, biodegradable paper containing wildflower seeds: those of remembrance - poppies for the UK, cornflowers for France and forget-me-nots for Germany. The flowers will now grow as 'living words' to symbolise peace and friendship, whilst remembering the bravery of those who fought for our freedom.

The two-year project, led by international poet Sally Crabtree, events manager for Bodmin Airfield Pete White, the World War I Aviation Society in Essex and Dani May, Bridge Schools Trust's lead for English, also developed new and special links between schools in England and France, with a focus on literacy, creativity and heritage.

To mark the first phase of the project, some of those poems



THE World War II plane scattering poems, written by the children of Bridge Schools in Bodmin, over The Somme

were flown back to Ors in France last summer by visiting pilots from Europe and taken to a commemorative service held in Ors; whilst Bridge Schools attended a celebratory event at Bodmin Airfield.

Since then, Sally continued to develop long-lasting links between the Cornish schools and schools in France, which are situated close to the Wilfred Owen Museum. The Wilfred Owen Society

have taken a keen interest in the links and children's work has previously been projected onto the walls of the museum.

This summer, two unique events on both sides of the channel took the project to a new level: the first being a 'fluttering' of the seeded poems from a vintage plane over The Somme this week and the second being a fluttering of the same poems over Bodmin Airfield later this month.

Following these special cross-channel events, Sally will then continue to help the children of Bridge Schools to sustain the links between our partner schools in France and the Wilfred Owen Society. Another aspect of the project, moving forwards, has been helped by

Anthea Hill, head of Polperro School, who is also hosting English and French lessons via a digital platform with the partner school in Ors.

Chief executive, Adrian Maasey said: "This has been an incredible event for our children. It has helped them both to remember the sacrifices of war but to understand the need; now more than ever, to celebrate the British Values of respect, tolerance and individual liberty following the tragedies of war."

"I am so grateful to everyone involved in providing this opportunity to connect with other children in France and for our children to remember the lives lost in such a dynamic way."

For more information about Bridge Schools Trust visit [www.bridgeschools.co.uk](http://www.bridgeschools.co.uk)

How amazing and inspiring! Well done Bodmin Airfield and Bridge Schools.  
**Respect, tolerance and liberty** - so poignant. Thanks for sharing Pete White.

*The new Sign Post on the Green at Little Downs is proving it's worth as even with the traffic chaos of late, we haven't had any callers, hooray.*

*Brenda Smith*



# CARDYNHAM CHURCH

***"I loved the Rev Scare-Crowe and it was lovely to see the replica of the brass displayed....I noticed that the knob of the 18th Georgian font had broken off.."***

Not the usual kind of email which drops in my in box, but this one was from Ann Preston-Jones, a very helpful **Heritage at Risk** Project Officer from **Historic England**. She tells us ***"fonts of the 18th century are rare in Cornwall."***

So I googled 18th century fonts and found very almost nothing. I wonder why have we got one when we also have a chunky Norman font as well?



When parishes began in the early Middle Ages, the proud mark of a parish church was a font and a bell. You could only be baptised in a parish church, only in a parish church could you call people to worship with a bell.

Our Norman font is 400 years older than our church building, obviously treasured through rebuilds in a way our wonderful Cardinham cross and medieval shrine to St Meubred, both of which were simply used for building stone, were not. So why have we got a second, 18th century font? You could dunk a baby right into the water in a medieval font and clergy did! By the 18th century a few drops of water were considered sufficient, so fonts only needed to be just big enough to hold a little water.

Baptisms were also sometimes conducted, especially for important people, at their home using a small portable font. So maybe, pure speculation, our 18th century font was made for the big house, say Glynn, then when they didn't want one any more, the church was considered a suitable home?

Who knows? What we do know is that our church has an extra treasure, to add to our Cardinham cross and Awmarle brass. Something unusual and easily overlooked. Ann has given us advice on how to repair it, and is making enquiries with other experts about it. Watch this space!

**Ann Kerridge**



# Cornwall Councillor Jenny Cruse

The insensitive work undertaken at the **medieval cross at Treslea** was rectified the very next day. This work was quite unnecessary as a suitable manhole was already in place on the highway. Although the area has been replaced, I am wondering, although they are known to be very robust, if the bluebells will survive?



I have been very happy to reinstate from Community Chest funds the **signpost at Littledowns**, it looks very smart and is of course of great importance to travellers. I visited the **Kernow Slide** area at Littledowns on the day of their opening. It seemed very quiet. We are expecting a planning application by the end of July. There is a presentation at Blisland Institute on Friday 30th August at 2pm and 5th Sept at Chy Trevail to explain how the **new Waste and Recycling programme** will work which is being rolled out this coming October for Area 4. I hope we have a good turnout for the events so that everything runs smoothly in October.

At Health and Adult Social Care Scrutiny (July 10th) we discussed **Fluoridation of our drinking water**. We have asked for further information for consideration. I personally do not agree with imposing fluoridation upon the whole population, I believe in choice, and if you wish to buy fluoride toothpaste then that is fine. The science is not conclusive and there are many questions particularly around using fluoridated water for formula infant milk and food and use for livestock and vegetables.

I wish to extend my congratulations to **Benedict Maquire**, his husband and family on his selection as Member of Parliament for North Cornwall. I look forward to working with him towards gaining fair funding for Cornwall, particularly the very underfunded rural areas, and our Adult Social Care services. I also want to thank Scott Mann for all his service to us over the past 9 years. He has supported me in many ways and will be greatly missed.

We now have a Labour Government who has already declared they will reimpose building targets on Councils thus putting our open countryside, green spaces, wildlife, and farmland under threat. We have a very sound **Cornwall Local Plan** that has worked to protect our precious wildlife and open countryside and I am fearful this will be pushed aside to impose overdevelopment without any thought to how we will cope with our already oversubscribed roads, schools, hospitals, waste treatment and surgeries. Five large solar farms have immediately been approved nationally and I have concerns about preserving our valuable farmland and future food security. We have already built a high number of houses within Bodmin, in sustainable areas and some on previously developed land and have made efforts to keep those numbers to a manageable level. Labours' manifesto is clear that it will be working towards regional devolution and regional mayors. This is not something I welcome, as our previous public consultation showed Cornwall had no appetite for a Mayor for Cornwall, let alone a regional mayor for the Southwest. We will be looking to preserve the Cornish identity and getting the best deal for our residents.

All these things will touch our lives and be assured I will be there to do what I think is right for our community.

**Jenny**

Email: [cllr.jennifer.cruse@cornwall.gov.uk](mailto:cllr.jennifer.cruse@cornwall.gov.uk) Mobile: 07710 219465

# REGULAR EVENTS

DATE	WHEN	EVENT	WHERE
Monday	7.30pm	Warleggan Young Farmers' Club	JHM
Monday	7.15pm	Millpool Chorale Practice	CRM
Tuesday	11.45-12.45pm	Pilates Mixed Ability Class	JHM
Tue (1st in month)	2.30pm	Book Club (821208)	CRM
Tue (except 3rd)	7.30pm	Bell Ringing	St. Meubred's
Tue (3rd in month)	7.30pm	Parish Council Meeting	CPH
Tue (last in month)	10.30am	Millpool Coffee Morning & Book Swap	CRM
Wed (except 3rd)	7.30pm	Bell Ringing	St. Meubred's
Wed (2nd in month)	2.30-4.30pm	Crafternoon	CRM
Wed (4th in month)	7.30pm	Warleggan History Group	JHM
Thur (1st in month)	2.30-4pm	Tea Party & Chat	CPH
Thur (3rd in month)	12.45pm	Helpline Lunch	CPH
Thur (last in month)	All day	Pensioners 10% Discount	Trago
Fri (term time only)	9.15-11.15am	Little Fawns Toddler Group	CPH
Sat (1st in month)	7.30-10.30pm	Pop Up Pub Night	CPH
Sat (last every month)	9am-3pm	Farmers Market , Mount Folly	Bodmin
Sun (1st in month)	10.45am-12	KIDZ CLUB	CRM
Sun	10.30am	Table Tennis (821409)	JHM

CRM = THE COMMUNITY ROOM, MILLPOOL METHODIST CHURCH

CPH = CARDINHAM PARISH HALL, JHM = JUBILEE HALL MOUNT

## PLEASE NOTE: PLEASE CHECK IF YOU PLAN TO ATTEND ANY OF THEM.

Please check village notice boards, emails and organisers for details.

If you have an event you would like us to publicise send details to [cmcmag@outlook.com](mailto:cmcmag@outlook.com)