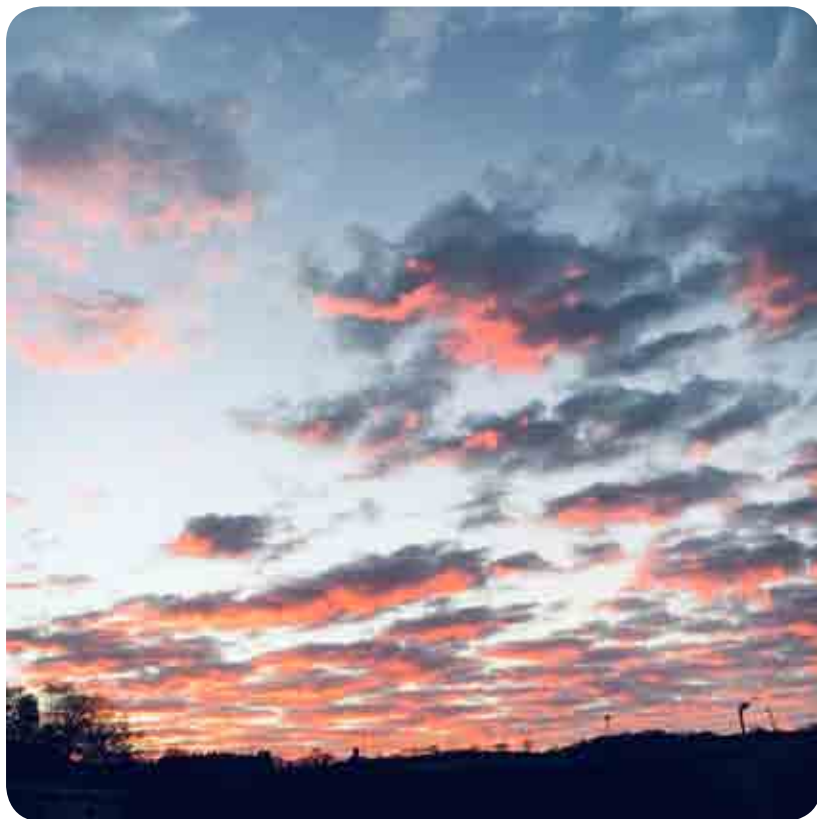




# **CARDINHAM & MILLPOOL** **COMMUNITY MAGAZINE**

**DECEMBER 21 – JANUARY 22**



*Sunset over Poundstock Close, Cardinham by Polly Airey*

**Issue 95**

**Single Issue Price £1.25**

## CONTACTS

### Editorial Team

Gill Long: 821745  
glong745@btinternet.com  
Lizzy Smart: 821101  
lizzysmart@gmail.com

### Treasurer & Advertising

Simon Smart: 821101  
simonseansmart@gmail.com

### Distribution

Julia Maynard: 821216  
juliammaynard@yahoo.co.uk

### Design, Print & Production

Polly & Marc Airey: 590095  
cmcmag@outlook.com



## CONTRIBUTIONS

Please send your contributions to  
**cmcmag@outlook.com**

- a Microsoft Word file is best.

Photos should be sent in  
uncompressed **jpeg** format.

We accept files and advertisements  
as high res **PDFs** (preferred).

If typed or handwritten, please send  
it to one of the Editors.

We select articles based on local  
interest and reserve the right to edit  
for clarity and length.

---

## *Copy Date for February/March 2022 Issue*

*Typed/Handwritten: WEDNESDAY 19<sup>th</sup> Jan 2022*

*Email: FRIDAY 21<sup>st</sup> January 2021*



---

### Advertising Rates & Sizes

Advertising is free for all local community and charity events.

All commercial advertising and events will be charged: 1/4 - £24pa. 1/3 page - £36pa.  
1/2 page - £60pa. Whole page - £120pa.

Single entry Commercial Announcements are also accepted from £6 to £25 (whole page)

### Photographs & Scanning

Please email an original JPG with no compression or reduction, PDF or TIFF to  
cmcmag@outlook.com

Special photographs, drawings, illustrations, etc can be scanned.

Please contact cmcmag@outlook.com

**For required format & any queries** please contact **cmcmag@outlook.com**

---

## *Need an extra copy?*

*Subscriptions min £4pa (postage £6pa)      Single Issue £1.25*

*Contact Julia on 821216*

---

The opinions expressed in articles in this magazine are those of the authors, and are  
not attributable to any member of the magazine production team.

# FROM THE EDITOR

Hello everyone, and welcome to this extra bumper, jam-packed issue!

We celebrate the fascinating life of Henry Jory on page 10 onwards, and the Parish Council advises us how to maintain our hedgrows on page 28 (very useful learning the timings!). There's lots going on in our area - Mount & Warleggan have some exciting events coming up (see page 15) and there's plenty to do and see in Cornwall over the festivities. Check out our What's On section on page 32, take part in the Christmas Quiz on page 33, and discover some of the best Cornish Traditions on page 34.

Finally, thanks for reading, contributing and subscribing to our *Cardinham & Millpool Community Magazine* this year, without you it would not have been possible to produce them. We hope you have enjoyed reading them. We wish you all a very merry Christmas and a peaceful, happy New Year.

*Lizzy, Polly, Gill, Simon, Marc and Julia*

Index of Advertisers			
Advertiser	Page	Advertiser	Page
Accounting Support	14	Health & Wellbeing	21, 24
Age UK	5	Local Event Information	Back
Architectural Design	24	Locksmith & Home Security	7
Art Material Supplies	7	Logs for sale	9
Car Servicing, MOT & Repair	29	Pest Control	31
Chimney Sweep Services	21, 31	Picture Framing	7
Coffee Shop	7, 23	Pilates	9
Events	6,22,24	Printing & Design	15
Electrical Contractors	5	Plant Hire	27
Flying Lessons	27	Plumbing & Heating Services	17
Froglet & Mouse gift shop	19	Post Office	23
Garden & Ground Maintenance Services	6,9,23	Renewable Energy	14
		Septic Tank etc Emptying	31
Garden Machine Service	23	Village Stores	7, 21
Hall Hire	7	Visitor Attraction & Events	6,22,24

# ST. MEUBRED'S CHURCH UPDATE

## Services for St Meubred's, Cardinham in Dec 2021 & Jan 2022

December 5th	9.30 am	Holy Communion
December 12th	4 pm	Cafe Church in Cardinham Parish Hall
December 19th	6 pm	Village Carol Service followed by mulled wine & mince pies in the Parish Hall
December 25th	10 am	Christmas Day Family Holy Communion
December 26th	9.30 am	Boxing Day, Feast of St Stephen, Holy Communion at Nanstallon Church
January 2nd	9.30 pm	Holy Communion
January 9th	4 pm	Cafe Church in Cardinham Parish Hall
January 16th	9.30 am	Holy Communion
January 23rd	9.30 am	Morning Prayer
January 30th	9.30 am	Team Service at St Petroc's Church

*Please note all the above services are subject to alteration in the light of changes in Covid restrictions.*

## BOOKS FOR SALE OR SWAP IN ST MEUBRED'S CHURCH

If you have books or DVDs you are happy to donate to our library for others to read or watch, please leave them on the bookshelf as you enter the church.

Do help yourselves to either. *Libby, Churchwarden*

## Invitation to Tea Party and Chat

Dear Parishioner,

We would love you to join us for **tea, cake and a chat** on the first Thursday of the month from **2.30 to 4pm in Cardinham Parish Hall**. Make some new friends or join with those you already know, please feel free to bring a friend if you wish. There is no charge and we will provide the refreshments.

The next two meetings will be **Thursday 2nd December** and **Thursday 6th January**. We look forward to your company.

Best wishes Libby, Loveday and Julia

Contact Libby on 01208 821303 or just turn up.





*Dear Friends,*

It won't be long before we start sending and receiving our Christmas cards along with their annual missives. It has become quite fashionable to be dismissive of these "round robin" letters but on the whole I think they are a good way of keeping in touch. Since lockdown eased we have met up with some long-standing friends who we hadn't seen for years and it was clear we had kept up to date via these annual letters. There is however a huge difference between the written letter and a face to face encounter.

For thousands of years God had been speaking to His people via intermediaries – prophets and priests with their spoken and written words. However by and large they refused to listen and did things their way. One of our Christmas readings comes from the book of Hebrews: "In the past God spoke to our forefathers through the prophets at many times and in various ways, but in these days he has spoken to us by his Son".

The heart of the Christmas message is God speaking to His people face to face in Jesus. The New testament writers were eye witnesses to this and were convinced that the babe of Bethlehem was none other than God in human form. Following in their footsteps we too may have a face to face encounter through Jesus Christ, so much better than simply knowing about Him.

As I write this I am very aware of the dark mornings and evenings. We still have a few weeks before we pass the turning point of the year and daylight starts to lengthen. We live in what can seem an ever darkening world with the pandemic still affecting us, economic pressures and the environmental crisis. Christ came to shed light in the darkness.

May the light and hope of Jesus fill our hearts this Christmas time and into the new year.

*Every blessing, John Hereward*

## **Cornish language small talk for your New Year's Eve party**

A wruss' ta kavos Nadelik da?  
Yma champagne y'n yeynell  
deg, naw, eth, seyth, hwegh...  
pymp, peswar, tri, dew, onan...  
Bledhen nowydh da!

Gwren ni kana Auld Lang Syne  
Yma kurun spern dhymm  
Ow erviransow bledhen nowydh  
My a ambos omjunya gans jym

Did you have a good Christmas?  
The champagne is in the fridge  
Ten, nine, eight, seven, six...  
five, four, three, two, one...  
Happy New Year!

Let's sing Auld Lang Syne  
I've got a hangover  
My New Year's resolutions  
I promise I will join a gym



**Our Christmas Lunch is on Thursday, 16th December. Please note the later time of 1pm. Sadly we have had to increase the price to £6 this year. We look forward to seeing you there. If you are a regular attendee we will assume you will be coming. If for any reason you are unable to do so, please ring Julia, 01208 821216 to let her know.**

**Our AGM will take place in the Parish Hall at 4 pm on Tuesday, 18th January '22. Don't forget, we are still available to provide lifts. To book please ring Shirley on 01208 721304 or Gill on 01208 821745**

**Wishing you all a Very Happy Christmas and New Year  
Best wishes, Rosemary**

## TALES FROM PINSLA GARDEN

### **A record of an hour in the garden at Pinsla**

Walking about what do I notice?

The *Plectranthus* and *Helichrysum* cuttings, a leftover task from yesterday. I had rooted them in small mustard jars on a window sill and potted them up ready to grow under the bench in the greenhouse. They were en route at tea time yesterday and got left in a watering tray overnight. Oh bother, did they get too wet? no, they are fine and now put safely away.

Check seeds in the propagator, *Anagallis*, also known as Blue Pimpernell, and Cornflowers are just germinating. Quick water and move on.

Outside the small polytunnel a tray of *Primula Deniculata* reproach me, they flower early so are growing at the moment. They look a bit hungry and would appreciate being slipped up a pot. But, it is dry and I want to blow some leaves up.

Inside the tunnel, check for mould, pests or diseases on the trays of young perennials that I'm growing on for next year. Think about whether to hand water the trays of *Impatiens omeiana*. They are dying back but they still don't want to get bone dry. Move a tray of tender *Begonia* cuttings that will be marginally warmer in the greenhouse over the winter, and therefore more likely to burst into life next spring.

Check Veg tunnel, all looks fine, but it could do with a bit of a soaking. So I set the automatic sprinkler to manual for 12 minutes.

The rest of the hour is spent blowing and raking leaves.

*Happy Gardening and Merry Christmas from Claire and Mark  
at Pinsla Garden*



The Works,  
South Penquite,  
Blisland, Bodmin,  
PL30 4LH



**Domestic, Commercial  
& Industrial Installation**



Contact Ben or Ron  
for free estimates and friendly advice on  
01208 851962 or 07887 561037

## SUBSCRIPTION PAYMENTS

Subs. to the magazine are £4pa, plus any donation you would like to make. **Subs run from January - January.**

Please pay your distributor as usual, or if you prefer, by Bank Transfer.

The magazine bank account details to use are:

**Sort Code: 30-97-28 Account No.: 02314833**

**Account Name: Cardinham and Millpool Community Magazine**

Please add your name/address as reference

Don't forget postage, if applicable, £6pa

Thank you for paying promptly



**Dial  
-a-  
Ride**



- Travelling from Cardinham & Millpool to Bodmin on Mondays & Thursdays.
- £5 return.
- Pick up from 8.15am, return lunchtime.
- Eligibility: mobility difficulties/over 55.
- Wheelchair access.
- To Wadebridge on first Thursday of the month - £6 return.

- Shopping trips.
- Visiting friends.
- GP appointments etc.

**For more information  
and to book call:**

**01872 266886**



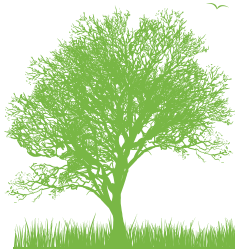
# HALGAVOR

## GARDEN SERVICES

Now taking on new clients for

Grass Cutting | Hedge Trimming  
**Garden Maintenance**

07753619092 and 01208 74417  
halgavorgardenservices@yahoo.com



# Village Greens

feastofbodmin@gmail.com

- ❖ BAKING Sausage rolls, scones
- ❖ BOOKS Bargain second-hand books
- ❖ CAFE Hot food and drinks
- ❖ CARDS Greeting cards & jewellery
- ❖ CLEANING Environmentally friendly household materials Ecover, Ecolab
- ❖ DAIRY Organic milk, cheese, cream, yoghurts, butter, etc.
- ❖ FRUIT Organic fruit from Riverford
- ❖ GROCERIES A good selection - organic & Fairtrade
- ❖ MEAT Organic local beef, pork & lamb
- ❖ PRESERVES Marmalades & Jams
- ❖ VEGETABLES All organic

A WARM WELCOME AWAITS YOU

A not-for-profit organisation run by volunteers for the community  
PLEASE SUPPORT US

## STABLE ART

BESPOKE PICTURE FRAMERS  
QUALITY ART SUPPLIES

BODMIN CORNWALL



www.stableart.co.uk

*Stable Art at the Chapel  
&  
Coby's Coffee Shop*

*Bespoke Picture Framers, Art supplies,  
Art & Craft Workshops  
The Chapel, Fletchersbridge,  
Bodmin PL30 4AN  
[www.stableart.co.uk](http://www.stableart.co.uk)  
01208 72518 or 07738 008707*

## DUCHY LOCKSMITHS

- MOBILE LOCKSMITH
- DOMESTIC, COMMERCIAL & AUTO
- INSURANCE RATED LOCKS
- ON SITE KEY CUTTING
- UPVC MECHANISMS, PATIO, GARAGE, DIGITAL, KEYSAFES
- REMOTE & CHIPPED KEYS SUPPLIED
- FREE ESTIMATES
- PROPERTY SECURITY & MANAGEMENT

[www.duchylocks.co.uk](http://www.duchylocks.co.uk)

Tel: 0800 97 888 37

Mob: 07966 654267

## Cardinham Parish Hall

Available for Hire



Cardinham Parish Hall  
Church Road  
Cardinham  
Bodmin  
Cornwall  
PL30 4BN



Chairman

Debra Best  
01208  
821554

Secretary and Bookings

Julie Best  
01208  
821227

[www.cardinhamparishhall.weebly.com](http://www.cardinhamparishhall.weebly.com)  
[cardinhamhall@btinternet.com](mailto:cardinhamhall@btinternet.com)

# Village Greens

*feastofbodmin@gmail.com*

If you are looking for those little gifts to say thank you, or for stocking fillers, we still have some Thai hand carved tea lights, ten in a box, lovely scents and neatly packaged for just £3.60.

The Christmas Chutney and Cranberry Sauce come with pretty Christmas 'hats' on the jars and the Mincemeat is suitably alcoholic. The ginger punch on the other hand is non-alcoholic, but just as good.

We also have our hand made soaps, four types, which you could arrange into a little box or fabric bag.

The free range Christmas geese are all booked, but there are still some chicken and ducks that have not been allocated.

**The Village Greens Café 1st THURSDAY p/month 11.00 – 3.00.pm**

**Please send your orders to Lynda on [vilaverde@btinternet.com](mailto:vilaverde@btinternet.com)**

**Your orders are always acknowledged within 12 hours.**

*Merry Christmas and Happy New Year! from Lynda & Di*

## CALLY BARRETT

### WIND TURBINE COMMUNITY FUND

**Cally Barrett Wind Turbine Community Fund welcome grant applications from organisations who are based in the Parish of Cardinham and who's work will benefit its inhabitants.**

**For more details or an application form please contact [charlottesmatthews@btconnect.com](mailto:charlottesmatthews@btconnect.com) or 0120872960.**

*THE PURPOSE OF THE CHARITY IS THE PROMOTION OF ANY CHARITABLE PURPOSES FOR THE BENEFIT OF THE COMMUNITY IN THE PARISH OF CARDINHAM, AND IN PARTICULAR THE ADVANCEMENT OF EDUCATION, THE PROTECTION OF GOOD HEALTH, BOTH MENTAL AND PHYSICAL AND THE RELIEF OF POVERTY AND SICKNESS.*



# Dry Seasoned Hardwood Logs

Locally and sustainably sourced firewood available in a range of quantities.

XL Log Nets (pictured) approx 30 logs per net - £7

Pickup Truck Load £80 –inc. Delivery within 5 miles of Cardinham.

Larger amounts available.

Kindling also available.

Discount applies for bigger orders.

Call 07971 772150 for more information.

Delivery Available.



LIZ COURT  
DOL  
**PILATES**

MOVE BETTER – LIVE YOUR BEST LIFE

DOESN'T MATTER WHAT AGE, WHAT SIZE,  
WHAT GENDER, WHAT FITNESS LEVEL,  
HOW BROKEN YOU FEEL.  
THIS IS A CLASS FOR YOU

MIXED ABILITY, EXPERIENCED TEACHING,  
A RESPONSE SESSION WITHIN A CLASS SETTING

LIMITED PLACES AVAILABLE

01528 999 781

LIZZIECOURT@HOTMAIL.CO.UK

*Oh and we have fun too!*

# cardinham Sports Club

[www.cardinhamports.org](http://www.cardinhamports.org)

Facebook - @cardinhamports

## Skittles Evening - Saturday 4 December

Come and join us for skittles! A light-hearted event - the Skittles Evening will this time be held at the Warleggan Jubilee Hall - Mount (TR30 4ES), £3 a head for adults (children free) 7pm to 11pm start. All welcome to come along: members, friends and many others. Bring your own drinks and snacks. Tea/coffee will be available. We can form teams on arrival. Any profits will go to club funds. Help us with planning - call Chris on 01208 821409 if you are thinking of coming. Check our website for latest info.

**The more the merrier** We would love to see more people making use of the tennis court, young and old. Annual membership (May to April) is just **£12 a year for a junior, £50 adult, £85 couple, £98 family**. Non-members are also welcome to use the court, paying a small fee each time.

Contact Les 821591 or Chris 821409 for more info.

**MERRY CHRISTMAS & HAPPY NEW YEAR EVERYONE!**

---

## THE LIFE OF HENRY JORY 15.1.1936 to 15.3.2020

We were all very sad we couldn't say our 'Goodbyes' to dear Henry after his struggle with throat cancer in March 2020 because of Lockdown restrictions. Brenda, his wife, said he died in the room he was born in. A simple funeral service was held by the graveside in Warleggan attended by just his close family.

How can I write about this well loved & well known 'gentle' man who has been so much a part of not just Mount village but around the locality all his life? Simon & I are relatively new comers to Cornwall, 18 years to be exact, so can only relate to how well he, Brenda & family have welcomed us over the years. As Mount no longer had any shops, Henry organised a rota to get the daily newspapers, as many of you know, from Bunts in Bodmin for some of us locals to collect from their conservatory & what a very much appreciated service this was plus a chance to chat with them both & get to know other locals.

To learn more about Henry & his family roots, Brenda lent me her copy of *Completing the Picture* (printed 2002) about, not just Henry, but 9 other locals including his late brother John (who you read about in the last issue) and Henry & Brenda's son Robert which was compiled by the well known local artist Annie Ovenden who has kindly agreed to let me use any of it plus photos. Occasionally I have added in brackets or removed some of the text without changing the meaning of the sentences.

In his own words he relates: "My grandad came from Millpool and set up business here (Mount) in 1895, they rented a property around the corner for some years & in the early 1900s he bought this corner here, which went up to Mrs Gittings's (which they sold). He



bought all of it in a block. My house was 2 houses at that time & John's house was one up & one down but Grandad eventually built on to it. Sunnyside as well & that was one up & one down then Grandad extended that. Years later, about 1928, they could get a schoolteacher here but there was nowhere for him to live so Grandad said: "I'll build a bungalow"... for the schoolmaster.

They worked extremely hard. Gran (Annie) used to do midwifing around the Warleggan parish. Back then she used to look after the lady for a fortnight, until she was well enough. Many a time there was nothing provided for the baby (as it) really wasn't wanted. Many a time Gran would come home to pick up some clothes to put on the new baby... Once she went to a place and the little girl showed her around and where things were and said: "If you want to piddle, you piddle in the cow's house."

Gran and Grandad got on extremely well. Then they lost their first child... Maud, who was very musical and that was a thing too because of all the babies she brought into the world, the only one she lost was her own daughter. She died on her second baby in 1922. Grandad and Gran took the baby and reared it here. They had it for 6 years until Lesley, Maud's husband, remarried.

Dad eventually married Mother who was from the St Austell area. She came here to work for Mr Rogers and then left to look after her Aunt. Dad followed her and they eventually married and came here to live. They all lived together with their in-laws, Gran and Grandad. All got on extremely well. Gran was a lovely woman to get on with.

I was born in 1936, Mother had May and John, which are older than me, but I was born on 15th January 1936. Born here I understand in this house, Shop Cottage. When Brenda and I first got married we lived up in the bungalow, didn't like it. When Mother died we renovated the house and we came back here to live. We're very happy here.

Of course Village life has extremely changed. We went to school just around the corner and used to come home for dinner. There was a horse and trap, like you see on the Wild West with a canvas top... Uncle Math... me Gran's brother, Matthew Keast... would bring the children in from Warleggan.

I remember when the evacuees were here, there used to be so many children that we had to go into the hall. Mrs Williams being teacher then. We had 3 teachers I think, but we ended up with 2. It got that people were gradually putting their children to Bodmin and it was making the school decrease, which is very sad really. We had happy memories there but it ended up with a lot of supply teachers and I was the last one to leave the school. It went on for a few years as a junior school and (then) the children went to Cardinham. Then... it closed... in the 1950s. So that was the first wrench to the Village.

Back then we had 2 butchers shops. Mr Rogers was on the outskirts down No Villa. Gran used to go to Sancreed. Mr Smeeth had a place on the end of the cottage there. Used to be cutting up the meat and you could go down and get what you wanted, the same with Mr Rogers. There was a blacksmith shop, I remember going to school and you could hear the anvil going. I can hear that ringing now. Mr Wilton, the blacksmith,

used to exaggerate.... a bit too much. For instance, he was shoeing a horse one time and the horse kicked the shoe and they found the shoe, he said, over at Ven Cross!

That has changed. The blacksmith shop has gone, the butchers... and now sadly our Post Office, that was a big wrench to the Village... what a difference that made. You know cut off... because a lot used to come in from Cardinham. So it has altered completely... and being brought up here in the Village we knew everyone... (and) in Cardinham ... (and) in the Parish...

When I left school I went to work with Dad in the business with John & Cyril Keast. Cyril worked with us for years. We always got on well, he was lovely, honest, trustworthy, good, working man. Me grandfather he used to do more working in the (Trevedda) mine... The captain of the mine was Grandad's brother-in-law. He used to do a lot over there. I know at one time they had to repair the arm of the water wheel and a bird had nested in the arm and they weren't allowed to touch it until they had hatched and gone! So the mine was employing quite a few people but then that closed.

But we did, with me Father, mainly house repairs and painting and decorating as well and of course undertaking. Back then you had to make a coffin the same day, but now we have a shell that does the removal. Most people like to have it removed. Everything gradually changes.

We used to do a lot of work for Lady Newbolt, gone to her all hours day and night! She and Sir Alec used to live at Trengoffe. He used to be the Governor of Malaya, Kuala Lumpur. They employed a lot. One of the things I hated was she would ring up: "Bees have swarmed, Fred." (That was me Father). Dad would say to me: "You'll have to hold the ladder ", and I'm terrified of bees ... a thirty foot ladder... it was a tall pear tree. Lady Newbolt would dress me up with oilers. Dad would go up with bare arms, just go up with a saw and cut the branch, bring the whole swarm down.

John went off to the army, we carried on the business. The War didn't make much difference because I used to go with the basket, black marketing, I used to go into Mr Ralf's in Trevorder and get what cream, butter, eggs we never went short.

But Dad died and that was a big blow... in the 1970s... about 64 (years)... he had heart trouble which... I've inherited. We carried on (with the business), we've never had to advertise... always had plenty of work... we had good customers ... on the whole.

The Chapel have been our mainstay. That gradually changed. We used to do 2 services every Sunday. Mother would have the Preacher to dinner... many a time here. Stayed to dinner and tea, then he'd take the evening service. Back then... when I was a child, we had a tortoise stove in the Chapel with a big pipe going right up through the middle (of it). You'd go in there and the thing would be dead, then half way through the service it would give a pop or a bang, smoke would fly and wouldn't that 'unroar'. By the evening service Dad would have it red hot. But it didn't matter how hot it was, Grandad used to sit next to the stove...bent over (it), he wouldn't take his coat off! Very happy experiences. I came on to play the organ, enjoy it and doing the flowers. I enjoy that. Never had no lessons for that, 'twas only self taught. Flowers have always been my hobby. I don't think I could live without me garden... .

The Carnival has kept going, it have had its ups and downs, but other Carnivals have packed in. Gran's tradition was always to ride a donkey. Mr Rogers had a donkey and I used to get him... from Tawna and if he decided he didn't want to go he wouldn't go! But Gran got on alright with this donkey... .

Robert came on the scene in the 1970s and of course that was a big blessing. He came into the business extremely well. We worked together lovely, so everything went smoothly and calmly. Elizabeth was born in 1973, she went to Cardinham School and Bodmin. She worked as a carer... she was Carnival Queen in 1990 and her 2 children ... have been Fairy King and Queen.

One thing I can say, somebody, ... a couple of years ago said: "Hello Henry how are you, made your fortune?" "No," I said "tomorrow!" We all think we'll be wealthier tomorrow. Mother and they never had no big fortune but we always had a good table, we never went short of clothes to wear and if I went to anything I always had a half-a-crown in me pocket. So what more do anybody want? Really, that's all you want."

*Ed. Lizzy Smart: And what better words to end with Henry. Thank you for your friendship & laughter over the years. R.I.P. with the Lord.*



---

## **CORRECTION**

The tractor shown in the picture in the October-November issue of the *Cardinham & Millpool Community Magazine* (p 28) was a 1962 Massey Ferguson 35. Not shown in the picture was the 1966 Massey Ferguson 165 which was pulling a Massey Ferguson 20 baler. All, despite their age, doing a fine and trouble free job of another hay harvest.

**Chris Brown**

# Penpoll Accounts



Specialising in small businesses for a friendly, professional & efficient service

*Self Assessments, Sole Traders, Lettings or Partnerships,*

*Vat Returns MTD compliant, Year End Accounts, Bookkeeping,*

*Payroll & CIS Services.*

Fully Qualified and Licensed Member of the AAT

Accreditations FMAAT, MATT

Working with Quickbooks software if desired

[www.penpollaccounts.co.uk](http://www.penpollaccounts.co.uk)

Carole on 01208 821846



## PENINSULA



Renewable Energy

## It Pays To Go Green...

It's never been a better time to invest in green energy,  
and the best bit is that you get paid for it too!



**CONTACT  
US NOW FOR  
FREE ADVICE**

on the Feed In Tariff,  
Renewable Heat Incentive  
& all your sustainable  
energy needs.

**We supply, install and advise on:**

- Solar PV
- Wind Turbines
- Heat Pumps
- Solar Thermal

Tel: **01208 851962** or email: **contact@penenergy.co.uk** [www.penenergy.co.uk](http://www.penenergy.co.uk)



# MOUNT & WARLEGGAN EVENTS

## LIGHTING THE TREE IN MOUNT

4th December

*join us at the memorial from 5.30 pm, the lights will go on at 6 pm*

## MOUNT CHAPEL

Sunday 19th December at 4.00pm

*Children's Christingle Service*

## CHRISTMAS EVE CAROLS BY CANDLELIGHT - 6PM START

*Weather permitting, this event will take place in the open-air at the Church Field, Warleggan. If the field is too wet, as last year, it will be held in the area directly in front of St Bartholomew's Church. Depending on COVID restrictions it may be in the church or else in the car parking field. There will be posters nearer the time.*

**ALL WELCOME— BRING A CANDLE, BRING THE FAMILY, BRING A FRIEND**

## WARLEGGAN HISTORY GROUP

SATURDAY 1st JANUARY 2022

NEW YEAR'S DAY WALK TO BLACKTOR

*Meet at Colliford Lake 'toilet' car park at 11am*

*At Blacktor within an area of only 3 hectares*

*lie 96 Bronze Age Huts and enclosures , described as  
"most spectacular".*

Thanks  
to John  
Herward for  
sending us  
these lovely  
autumnal  
images!



# CORNISH PRINTWORKS

*Passionate about Print*



01208 590095 [cornishprintworks.co.uk](http://cornishprintworks.co.uk) [hello@cornishprintworks.co.uk](mailto:hello@cornishprintworks.co.uk)

## YOUR LOCAL PRINTERS

**With Design, Print & Free Delivery!**

From Flyers to Banners,  
Invitations to Menus,

Business Cards to Brochures  
we can help you!



# MILLPOOL METHODIST CHAPEL NEWS

We were pleased that our planned Autumn events were able to go ahead. A very successful Macmillan Coffee Morning raised £335.00. The **Harvest Festival Lunch and Service** were well attended and donations for the Food Bank filled several bags. The return of Edith and Rick's **Quiz Evening** was an enjoyable and closely contested affair with **The Hopefuls** (Chris, Olwen, Gill, Sue, Ray and Carol) being the successful team.

Many thanks to Andrew Baker for completing the exterior painting of our premises in time for our **Harvest Festival**. This was paid for by a grant from the **Cally Barrett Wind Turbine Community Fund**, for which we are very grateful.

We are now looking towards Christmas. No doubt the tree will be up in time for the first Sunday in Advent (November 28th), when the service will be led by Caroline Bailey. Our **Christmas Eve Candlelight Service** is to be at the earlier time of 6.00pm.

The Chorale have been meeting since the middle of September and are busy rehearsing for two engagements: on the 26th November in the Bodmin Shopping Arcade during late night shopping and on the 9th December in St Petroc's Church at the beginning of Jonny Cowling's Christmas Show. Some of us are going to the Theatre Royal Plymouth to see Calendar Girls on the 2nd December. This has been rescheduled twice, so fingers crossed!

This Autumn we have welcomed three new choir members, and welcomed back another. We are sad to lose Jan and wish her and Pete all the best in their move. Jan will also be missed from our Book Club. Finally, Christmas and New Year Greetings from us all at Millpool Chapel.

*Harvest at Millpool with the new screens in memory of Michael Roose.*



## Thank you ...

We, (Jan and Pete Fleming, from Cardinham Chapel) would like to thank our friends in the Cardinham community for their warm welcome, support, friendliness and help during the transformation of the chapel, from a virtual ruin to a loving family home. The journey has been filled with learning, laughter and love. We are looking forward to our next adventure as Grandparents.

*Jan and Pete*





## Hedgehog Class



The children in Hedgehog Class continue to make some fantastic progress in all areas of the curriculum. They have been consolidating their number facts and working hard on learning to read. In science, they have been learning all about their senses and what they might smell, feel, hear, taste, see and touch in different settings. As part of their PSHE, they have focused on Anti-Bullying and have explored healthy lifestyle in their outdoor learning too.

## Squirrel Class



The second half of the Autumn term started off with a fruity twist in Squirrels class! The first day back after the half term break was a papaya taste testing day! This was to help kick off a dazzling start to our new class story *'The papaya that spoke'*. The children tried pieces of fresh papaya before adding other fruits such as strawberries and banana to make smoothies that were tried and enjoyed by all the children! The children have worked incredibly

hard learning their new story text through the use of storytelling actions and drama techniques including hot seating and character freeze framing. We have continued learning about volcanoes in our Geography lessons and even had a go at making origami volcanos out of paper. The children worked hard and with great determination to complete the task. Science started with sorting and comparing different types of seeds and bulbs. The children will be conducting investigations over the next couple of weeks to see which conditions are the best for growing cress. We are also getting ready for Christmas and we are really excited to have started rehearsals for our school play *'A mouse in Santa's house!'*.

## Fox Class



In English, the Year 6s started the term making dollhouse size caravans as the Dazzling Start for our new text, *'The Caravan'*. The Year 4s and 5s made paper boats and raced them for their text, *'The Canal'*. This term the children in Fox and Deer class have come back full of enthusiasm and ready to learn! We have the privilege of using the village hall for PE where we are improving

our dance moves. In Geography, unfortunately our Egyptian unit has come to a close but instead we will be improving our map and direction skills by utilising more of Cardinham's beautiful surroundings. As it is the term leading up to Christmas we will be looking at different religious celebrations. We have recently looked at the Hindu festival of Diwali and made Diva lamps which the children thoroughly enjoyed. Finally, in music, the children are working on their performances for the Christmas concert. We will not give too much away but it is definitely going to be better than 'Last Christmas'!



# USEFUL PHONE NUMBERS

(preceded by 01208 unless otherwise stated)

Police NON emergency		National 101
Blisland Inn, Blisland		850739
Cardinham Bellringers (Captain)	Peter Tucker	821382
Cardinham Hall Bookings	Julie Best	821227
Cardinham School (Acting Head)	David Jones	821326
Cornish Guardian Correspondent	Lesley Martin	821200
Cornwall Councillor	Jenny Cruse cldr.jennifer.cruse@cornwall.gov.uk	07710 219465
Film Club	Debra Best 821554      Julie Best 821227 Sonia Tucker 821382      Nic Best 821459	
Flowers for St. Meubred's	Libby Pidcock	821303
Friends of St. Meubred's	Loveday Sutton	821350
Gardening Club	Loveday Sutton	821350
Helpline	Gill Long/Shirley Searle	821745 / 821304
London Inn, St Neot		01579 326728
Methodist Circuit Office	office@bpwccircuit.org.uk	895157
Millpool Chapel	Shirley Doran	813685
Millpool Coffee Morning	Julia Maynard	821216
Millpool Institute/Snooker Club	John McDonald	821448
Mother & Toddler Group	Crissie Butler	07540 181416
Parish Council Chair	Julie Best www.cardinhamparish.net	821227
Parish Council Clerk	Jo Wilson	01841 520796
Bodmin Team Ministry, Team Rector	Paul Holley	07470 192378
Sports Club	Les Spong	821591
St. Meubred's Focal Minister	Revd John Hereward	79078
St. Meubred's PCC Secretary		821303
St. Meubred's Reader	Ann Kerridge	76714
St Neot Brownies	Karen Cunningham	01579 321581
St Neot Scout Group	Nick Hinchcliff	01579 320776
Warleggan Young Farmers	Laura Colwill lauragco@hotmail.co.uk	07913 330078

Please send corrections or additional numbers you would like to see to [lizzysmart@gmail.com](mailto:lizzysmart@gmail.com) Tel 821101





Froglet & Mouse

Quirky home decorations, handmade personalised prints & stationery



frogletandmouse.co.uk • shop@frogletandmouse.co.uk • 01208 821788

gorgeous online gift store based in Cardinham, free delivery



## Matthew Keast Plumbing and Heating

All aspects of plumbing and heating undertaken  
Gas, LPG  
Central Heating, Bathrooms, Servicing, Certification  
New Builds, Renovations  
Tel: 01208 821364  
Mob: 07957 727183



# ✿ CARDINHAM & DISTRICT GARDENING CLUB ✿

## Cardinham & District Gardening Club Report November 2021

Our October meeting was a chance for members to visit **Trebartha Gardens** near Launceston. A super day out and a chance to enjoy this extensive and beautiful historic landscape garden featuring ponds, streams, cascades, rocks and woodlands, and fine trees, plus ornamental walled garden and private modern country garden at Lemarne. Just such a lot to see!

We are at last back to meetings in the Parish Hall after over eighteen months, and what a super evening our first one was on November 8th. Jane Hampton gave a very entertaining and interesting talk on plants for dyeing. Fascinating to learn how many natural dyes the amateur can use that are fixed, bright colours and of course acid free. Her slides of fabrics dyed in Peru showed just how vibrant these dyes can be. She bought a wide selection of beautiful fabrics she had dyed herself and then woven. Having had a very messy time fairly recently with a commercial dye I was very keen to learn how I could do this without leaving a residue in my machine. After a dozen washes it still spat out bits of navy blue on my whites!

Our next meeting is on December 13th, at 7.30 pm in the Parish Hall, when Becky Martin, of the **Duchy Nursery**, will host the **Christmas Quiz**. We will enjoy some festive refreshments and a light hearted chance to test our gardening knowledge. We will work in teams, so much more fun!

January 17th is the first meeting of 2022 in the Parish Hall, at 7.30 pm. The speaker will be Adrian Langdon, who will share some of his beautiful photography, in a talk **'The Natural History of the River Camel from the Source to the Sea'**.

Do join us, we would love to have your company and to share our love of all things gardening related!



Please visit our website at  
**<https://cardinhamgardenclub.wordpress.com/>**  
for more details or call me on 01208 821303

Happy gardening,

*Libby*

Photo of Trebartha Garden

# Magdalene Centre of Wellbeing

We offer 1 : 1 **Reiki Healing** or in small groups and with Distant Healing  
*Reiki has become one of the most accepted healing methods in the Western World.  
It gives help for stress, anxiety & pain. It helps to cleanse and rebalance.*

We are Practitioners of **Hypnosis, Clinical Hypnotherapy & Past Life Regression**  
*"Hypnotherapy can assist with phobias of any kind; Anyone suffering from  
Panic Attacks, Obsessive Compulsive Behaviour, Addiction, Weight loss, etc"*

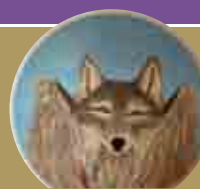
*Taken from 'Dr. What's the Alternative?' by Doctor Hillary Jones*

We carry out **Shamanic Practices** by **Illumination, Fire Ceremony & Soul Retrieval**  
and give and teach **The MUNAY KI Rites**

We also run **workshops** throughout the year at the following locations:  
**Blisland, Bodmin, Cardinham, Tintagel & Truro**



Unit 1, The Glebe, Blisland, Cornwall PL30 4JE  
Tel: 07821 389301  
magdalenecentre74@gmail.com  
FB MagdaleneCentre



## MARK FITCH CHIMNEY SWEEP

- \* BRUSH & VACUUM
- \* CLEAN, RELIABLE SERVICE
- \* COVERING ALL S.E. CORNWALL
- \* DISCOUNT FOR MULTIPLE CHIMNEYS
- \* COWLS & GUARDS FITTED
- \* STOVES SERVICED



*Call  
Mark on:*



01579 350762  
07773 462643

## OPEN AFTERNOON MILLPOOL METHODIST CHURCH

Sunday 12th December 2.30 - 5.00 pm

A short dedication of the new chairs and screens  
by Rev Alistair Sharp

Light refreshments and a warm welcome to all.



**Industrial Heritage** all set in 6.5 acres of ancient oak woodland in the beautiful Loveny Valley, nr Liskeard  
Slate Mine ~ Underground Lake ~ Gardens ~  
Woodland walk ~ Enchanted Dell ~ Gift Shop

## Open for self-guided tours and concerts

Carnglaze Caverns will be closed for an extended Christmas break this year of 20th to 31st December inclusive, to help recover from the past two years.

Thank you for your support and we look forward to welcoming you again in 2022. Nadelik Lowen.

**Tours | Weddings | Concerts | Events**

Supporting



Cornwall



01579 320251

[www.carnglaze.com](http://www.carnglaze.com)

[info@carnglaze.com](mailto:info@carnglaze.com)

## ANDREW OATES GARDEN MACHINERY

## SERVICE & REPAIRS



New machinery on request  
All leading brands  
Prompt service.  
Competitive rates  
25 years experience  
Collection & delivery  
service available



**01208 821527**  
**07791930935**

## Ground Maintenance Services

**Hedging & Fencing**  
**Stone Walling**  
**Hedge Laying**  
**Tree Pruning**

**Decking & Patios**  
**Ground Clearance**

### Contact:

Greg  
07887 877103  
01208 821687



Dave

07779 096331  
01208 821318

## THE BLISLAND POST OFFICE AND STORES - 01208 851730

**Fresh Daily – Milk, Newspapers, Magazines, Malcolm Barnecutts – Bread, Pasties and Cakes. Green Grocery and wide selection of Ortons Meats**

We stock a wide range of Groceries for all your needs including Wines & Spirits

**A fine selection of Cornish and Organic Foods inc. Cheeses,**

**Biscuits, Jam, Honey, Chocolate & Clotted Cream**

**also Luxury Hampers containing Cornish Produce**

Original Paintings, Prints, & Photography by local artists and exclusive local pewter

**Doctors Surgery on Monday afternoons and visiting Beautician on Wednesdays**

Chiropody and Acupuncture on Thursday afternoon, held in the Consultation Suite.

**Internet Café - Full Disabled Access & Parking - Baby Changing Facilities.**

Try our Home Made Cakes, Light Snacks and Drinks available from our Café.

### OPENING HOURS

#### Shop

Monday - Friday 9 am - 1.30 pm  
(closed 1 - 3) 3 pm - 5 pm  
Saturday 9 am - 5 pm  
Sunday 9 am - 12 noon

#### Post Office

Every weekday  
morning  
9 am - 1 pm

#### Café

Same as  
Shop hours  
Mon - Fri

**See website for latest information. Visit [www.blisland.info](http://www.blisland.info)**

**Blisland Community Association owned by and run for the Village of Blisland**







**APS**  
ARCHITECTURAL  
DESIGN

A bespoke Architectural Design service  
from inception to completion

For a free consultation  
call 01208 821126  
[www.apsarchitecturaldesign.co.uk](http://www.apsarchitecturaldesign.co.uk)



**CIAT**  
CHARTERED PRACTICE

## Mobile Chiropody & Foot Health Care Cornwall

Regular appointments available  
In the comfort of your own home

**M. Stirling**  
**Tel 07856 443339**




**East Cornwall Bach Choir**

# A Christmas Celebration

St. Petroc's Church, Bodmin  
SATURDAY  
11<sup>th</sup> Dec 2021  
7:30pm

Music Director  
Chris Howarth

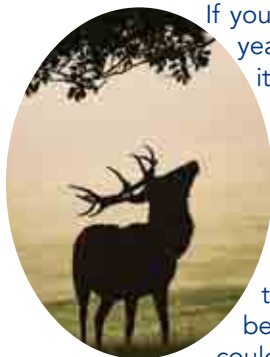
Bach Cantata BWV 191  
Pergolesi Magnificat  
Buxtehude  
Das Neugeborene Kindelein  
Congregational Carols

Tickets Available from  
www.eastcornwallbachchoir.co.uk

# This Farming Life - Bodmin Moor Style



## 21st October



If you are a fan of Autumn Watch, you are guaranteed to see every year, amazing footage of the red stags in rut in Scotland. However it is not necessary to go up north as an equally stunning spectacle can be seen on Exmoor. Last week I went up to the moor, stayed at an inn and got up well before dawn to be driven up onto the high moor. We were met by thick fog – not the best weather conditions for seeing deer! However after an hour of sitting there thinking I could have stayed in bed longer, the mist started to lift. We then had the beautiful sight of the mist lifting with the sun attempting to penetrate and then the sounds of stags bellowing on either side of us. They were some distance away but could obviously hear each other and were trying to outcompete the opposition in volume. Quite an experience - eerie, very atmospheric and amazing all at once. As the mist lifted further we were treated to sightings of the rampant stags bellowing and chasing around their hinds in a testosterone fuelled frenzy. There are some sounds you can recognise instantly and never forget and rutting red stags are now imprinted on my memory.

## 28th October

It has been a good year for autumn raspberries. I was delighted that my resident blackbird successfully reared three broods of youngsters, but they all still seem to be in the garden and eating my fruit. I do feel it is a bit of a cheek that they object loudly when I interfere with their feasting on my berries. To partially defeat them I can pick the berries before they are completely red which means we are getting some of the crop, I suppose the motto is, if you have a garden for wildlife everything has to be shared!

## 4th November

Well, my writing to you all just proves how wonderful technology can be - when it works. Last week, as some of you know, it did not work, no internet, but with the help of our team we found ways round it, our apologies to anyone who was inconvenienced. A week later it is still no internet, but with a daily visit to my neighbour I can access emails, but please note that any response will take 24 hours. So now Village Greens is once again an international concern with part of its admin headquarters in Portugal, [hence the internet difficulties]. Getting to Portugal was more challenging this time as we are now non-EU. We couldn't take any meat products, dairy produce, vegetables, fruit or plants with us. I suppose I could have made sandwiches with soya spread and a vegan mushroom pate in them as long as I could prove



everything was vegan. As it is I bought some small pies, baked them and then returned them to their vegan packaging. And Trek bars are vegan, great for snacking. For the dogs we were allowed to take a little dog food for the journey but couldn't take boxes of Dentastix, which are much cheaper in the UK, because they had meat extract in them. For the first time my Christmas puddings will have a vegetable suet as we can't buy suet out here and our friends Bisto gravy granules, British bacon and Stilton which they crave were off the list. However I gather we can return with anything, no restrictions on imports to Cornwall. Something not quite right there?

## 11th November

One of the first things I like to do when we arrive in Portugal is look at the land. There were two days of rain in September so the fields have sprouted a sparse covering of green, but not enough to feed the livestock, cattle are still being fed hay, or more commonly straw. We had four days of showers when we arrived at the end of October which may help, but here in the drier part of the country you never get grass in the fields as in Cornwall, instead it is a collection of what most people would call weeds, drought resisting perennials or annuals that sprout again as soon as it is damp, growing between clumps of tall dried thistles and grasses. Yellow is the predominant colour and fields can be a beautiful blaze of gold waving in the breeze. The trees are mostly evergreen, holm oak, cork oak or olives, and at least the rain has washed some of the summer dust off the leaves. The few deciduous trees join the flowers in the fields and go bright yellow before dropping their leaves, no oranges, golds or russet browns here.

## 18th November

Well we have had our first shopping trip here in Portugal and it is interesting to see how things have moved on with Covid and the environment. Here it is law to wear masks in all public places, so a trip to the supermarket saw no exceptions. Sadly organic food is still very hard to come by, organic chicken and free-range pork and maybe the local lamb being the only meat I can be fairly certain of that are free from growth promoters, anti-biotics and the like. Fairtrade or organic groceries are almost non-existent. Going plastic-free has made little progress. Supermarkets stopped dishing out carrier bags ad infinitum several years ago and now meat and fish at the counter comes in lined paper bags, much the same as the UK. Unfortunately Covid has led to some increase in packaged fruit and veg, and therefore standard-sized fruit and vegetables. I hate the waste supermarkets generate by insisting that their suppliers produce fruit and vegetables all the same standard size. Here we get a lot of our food from the street market, patronising those that say they do not spray their products with chemicals. It is still possible to buy fruit and vegetables of every size and shape as they come out of the ground/off the tree, no waste and low carbon footprint, and no plastic bags either. Not quite as good as Village Greens but getting there! With all the stalls now well spaced along the street and everyone wearing masks, the market is still a great place to shop, full of atmosphere, people catching up on gossip [all 2m apart] and lots of local produce, of all sorts, from smallholders.

**D.I. Wells**



## **N J Blanchard Plant Hire**

**T:** 07791 072806 / 01208 821758 **E:** [nick.blanchard@hotmail.co.uk](mailto:nick.blanchard@hotmail.co.uk)

Family run business with over 15 years experience,  
fully qualified & insured operators - specialising in:

**Drainage Site Clearance Scrub Clearance**

**Septic-Tanks Equine Yards**

**Concreting Sand Schools Pipe-Laying Landscaping**



For more examples of our work please visit us on Facebook

**[www.bodminairfield.com](http://www.bodminairfield.com)**

**Want to Fly an Aeroplane?**

**Treat yourself to a trial lesson**

**Gift vouchers also available for the Perfect Gift!**



**Obtain your Private Pilot License  
and other ratings.**

**Call us for more details**

**Cornwall Flying Club Ltd. 01208 821419**

**31**  
Open from 1000 to 1500  
Thursday to Monday

# CARDINHAM PARISH COUNCIL

## Responsibility for Managing and Maintaining Roadside Hedges

If you have a hedge on your property which is next to a public road or right of way then you have a legal obligation to maintain that hedge so that

- **users can access the highway and footpaths and**
- **that their safety is not compromised.**

This applies whether you are a landowner/farmer, business owner or owner of a residential property where a hedge abuts a public highway.

Cornwall Council has produced a leaflet that explains how best to look after and maintain your hedges and how best to fulfil your legal obligations.

The link to the leaflet is <https://www.cornwall.gov.uk/media/u4aophcp/cornish-highway-hedge-leaflet.pdf>

The main points to note are listed below but please read the leaflet for further detail on your obligations:

- **your responsibility relates to any hedge that directly abuts a public highway**
- **If highway hedge growth has become a problem Cornwall Council can serve notice on the owner / occupier requiring the work to be completed in a specified time period. If it is not done Cornwall Council can have the work done and recover the costs from you.**
- **Contractors working for Cornwall Council must clear surface growth; side growth remains the responsibility of the landowner,**
  - **Hedge trimming should be undertaken annually in winter months December to February.**
- **Summer trimming should only be done once in June / July on**
  - 1. All roads - where visibility is impeded ie at junctions/ passing places/ blind bends**
  - 2. Two Lane roads – to minimum width of 5.5m/ to maintain the free flow of traffic**
  - 3. Single Lane roads – to minimum width of 2.75 m / to maintain the free flow of traffic.**
  - 4. Where there is a verge, trim to maintain visibility**
  - 5. A margin of 1.5m should be maintained for pedestrian use where necessary.**
- **Height – if trees canopy over the highway they must be cut to a suitable height for usage over the highway. This varies from 2.1m over footpaths to 2.5m over bridleways and to 5.2m over roads. It is best done during December to February.**

Advice can be obtained from Cornwall Council - Environment Planning and Economy.



# DARCROFT GARAGE & MOT CENTRE

FOUR WINDS ~ BODMIN ~ PL30 4HH

**Class 4 & 7 MOTs**



Cars & Camper Vans

Light Commercial

Horse Boxes & Trailers

All Repairs Undertaken

Servicing

Diagnostics

Welding

Local Breakdown Recovery

Friendly Efficient Local Service & Advice

**Tel: 01208 821238**

## JUST A FEW MILES AWAY.

Question...can you guess, or perhaps you know, where the longest commercial premises are in the UK? Birmingham, London, Sheffield ? Would you be surprised if I tell you they're only four and a half miles from Millpool. What? A huge industrial complex deep in rural north Cornwall.

Nowadays it's hidden by a rash of trees and undergrowth (and security fencing ) but behind all this lies an incredible piece of industrial heritage. A range of connecting buildings over 500m long and is, reputedly, the longest listed (as in planning ) building in the UK.



So where?

At the end of the northern section of the Camel Trail, between Tresarrett and St Breward and, as you've probably guessed, I'm talking about the Wenford Clay Dries, or what remains of them, at Poley's Bridge. Buildings built of granite, brick, block and all roofed with asbestos.

They were constructed in the early 1900's and served the clay pits at Stannon, to the north of St Breward. Liquid clay, in the form of slurry, was piped from there a distance of over 4 miles to the giant settling pits at the rear of the buildings. The clay was then dried and loaded onto railway trucks. In fact, years ago when we first moved to this area and the railway hadn't been ripped up, there used to be a daily clay train down, what is now the Camel Trail, onto the main line at Bodmin. You can still see the railway lines crossing the roads at Dunmere and Helland. The dries stayed in operation until 2002. Since then, although being listed for its historic industrial past, they have been neglected. The site was originally chosen due to the nearby railway that was built to serve the granite quarries at Hantergantick and De Lank.

There have been some exciting plans for the site including one, a few years ago, that was a design that would incorporate 36 luxury loft-style residential units and large gallery spaces for local artists. A massive challenge particularly the costs involved and part of the structure being listed. Currently the whole area is taken over by street 'graffiti' artists and, as far as I am aware, the whole site is still up for sale.

So if you fancy a fascinating short walk, bike ride, start at Tresarret, walk towards St Breward, along the Camel Trail, cross over the dashing De Lank river before it meets the river Camel, cross the road at Poley's Bridge and... be amazed at what you see.

**Richard Sutton**

# R. MEARS & Sons

## CHIMNEY SWEEP

*Vac & Brush*

Cowl Fitting Service

CCTV investigation work carried out  
01840 261 221 • 07737 533392



HETAS®  
Registered

[www.sweepcornwall.com](http://www.sweepcornwall.com)

*Covering Cornwall & West  
Devon*

N0711/30134



Controlling in your area

Ants  
Cockroaches  
Fleas  
Flies  
Moths  
Moles  
Rabbits  
Rodents  
Wasp/Hornets



North Cornwall Pest Solutions

24hr call out  
Fully insured  
07770677029

[finnmore2000@aol.co.uk](mailto:finnmore2000@aol.co.uk)

Prompt, Discreet, Friendly Service

BPCA Level 2 in Pest Management



## Berridge Environmental

Septic Tank, Cesspool & Drain Clearing  
Local, Friendly Service

Contact Ian Sloggett

Office 01208 75855 Mobile 07872 315492

**You make it - We take it**

## WHAT'S ON THIS DECEMBER & JANUARY

### **Ice Skating at the Eden Project** 23rd Oct 2021 - Feb 2022

Our glittering ice rink is back! For full details and how to book:

<https://www.edenproject.com/visit/whats-on/ice-skating>

### **Sterts Theatre** Various dates

We move inside as winter arrives with a selection of plays, performances and a Christmas Fair before finishing the year with an evening of carols...

Baba Yaga's Christmas Party 2nd/3rd December 6pm and 4th December 2pm

Twisted Christmas Friday 17th December; 7pm

Christmas at the Musicals Saturday 18th December; 7.00pm

Candlelit Christmas Celebration 22nd December; 7 to 8pm

The Christmassy Christmas Show with Squashbox Theatre 22nd Dec; 12noon

<https://www.sterts.co.uk/copy-of-2021-season>



### **SEEN at The Exchange, Penzance** 23 Oct 2021 to 8 Jan 2022

This exhibition increases young local LGBTQIA+ people's engagement with contemporary art, allows them to create a platform that speaks to them, for new voices to be heard and for them to be seen.

<https://newlynartgallery.co.uk/activities/seen/>

### **Tunnel of Lights Arctic Adventure** until 9th January 2022

The immersive experience will see visitors encounter shipwrecks frozen in time, following the footsteps of adventurers through a world of ice. They'll discover frozen waterfalls, giant icebergs, ice caves. The tunnels will be illuminated with thousands of lights, filled with an atmospheric arctic soundscape and guests will also encounter snow fall.

<https://www.shipwreckcharlestown.co.uk/tunnel-of-lights-arctic-adventure/>

### **Finnegan & Tweed** 7th- 23rd December 2021

Finnegan & Tweed were once the undisputed kings of the Victorian Music Hall. However with Tweed long gone, the remaining Finnegan has become a miser to rival the likes of Scrooge. Spending yet another Christmas alone with the windows firmly nailed shut, little does he know that he's in for a rude awakening. Can Finnegan seize this intervention and avert crisis to become a better man? Or will old habits die hard? Paying homage to the early days of Music Hall, Finnegan & Tweed injects comedy and a rich sound scape into a heart-warming festive tale. Drawn from the works of Charles Dickens and performed by one actor, expect more Christmas gags and puns than a Christmas show should ever contain!

<https://www.intobodmin.co.uk/box-office>

### **Santa Specials at Bodmin & Wenford** Various dates

After not running in 2020 due to Covid, the Santa Special trains will once again be steaming from Bodmin General on selected dates throughout December in the run up to Christmas. Santa Specials will be running on 4th, 5th, 11th, 12th, and 17th-24th December. <https://bodminrailway.co.uk/things-to-do/events/>





# CHRISTMAS QUIZ

1. What is Scrooge's first name?
2. Complete the lyrics: *On the fifth day of Christmas, my true love sent to me ...*
3. In which city does Miracle on 34th Street take place?
4. What date is Epiphany?
5. How many different types of gifts did The Wise Men bring?
6. Can you name all of Santa's reindeer (point for each)
7. Who stole Christmas?
8. How many points does a snowflake have?
9. What colour are the berries on mistletoe?
10. In what town was Jesus born?
11. What fruit do you need to make a Christingle?
12. What is traditionally hidden in a Christmas pudding?
13. What does the word 'advent' mean?
14. *Westward leading, still proceeding* – name the carol this is from.
15. Santa Claus is also known as Saint ... ?
16. In Elf, how does Buddy answer the phone?
17. When are the 12 days of Christmas traditionally celebrated?  
a) Dec. 14-25   b) Dec. 13-24   c) Dec. 25 – Jan. 5   d) Dec. 20-31
18. Which country banned Christmas in 1644?
19. In what year was the Christmas card invented?  
a) 1834   b) 1852   c) 1901
20. Name the Christmas-themed ballet that premiered in Russia in 1892?

## 9 OF CORNWALL'S TOP CHRISTMAS TRADITIONS TO MARK THE FESTIVE SEASON

*Here are some traditions in Cornwall that you might not know about - some are heart-warming and others are downright strange...*

**1. Christmas swim** The tradition is expanding all the time, but among the beaches that are supervised (please don't go to your local cove and swim on your own after downing the turkey and trimmings) are Crooklets in Bude, which sees hundreds raise money for the surf life-saving club, Sennen, Polzeath – where wetsuits are forbidden – Watergate Bay, Trevaunance Cove and Gwithian.

**2. Stargazy pie** The dish is said to be traditionally eaten during the festival of Tom Bawcock's Eve to celebrate his heroic catch during a very stormy winter. According to the modern festival, which is combined with the Mousehole village illuminations, the entire catch was baked into a huge stargazy pie, encompassing seven types of fish and saving the village from starvation.

**3. Cornish Bush** Like other Cornish traditions, the Cornish Bush has its roots in Pagan celebrations for the winter solstice. The three-dimensional wreath represents new life and is made by weaving holly, mistletoe and ivy around a circle of withy. The ring is traditionally hung indoors on December 20 and is topped with an apple. A candle in the middle welcomes in the God of Light.

**4. Mousehole Lights** Thousands also descend on the west Cornwall fishing village for Christmas lights that are like no other.

**5. Guise dancing** Guising, mumming, masking – whatever you call it, it was popular across Britain for centuries. Cornwall's own flavour of guise-dancing featured players touring villages in masks and animal skins, led by a feisty 'Lord of Misrule'. Cornwall kept guising when much of Britain phased it out – perhaps because it was all about disguising yourself, in villages where you'd know everyone. It meant getting away with much mischief, a few high jinks and possibly some shenanigans.

**6. Carols** Penzance-born Bodmin MP Davies Gilbert gave history one giant Christmas gift: he revived the carol. Carols had fallen out of favour ever since Puritans banned Christmas in the 1640s... But Gilbert took matters into his own hands and urged those with good memories to send him all the carols they could remember for him to preserve. In 1822, he assembled them in *Some ancient Christmas Carols*, including the first publication of *The First Nowell*.

**7. Montol** Another seasonal event that is unique to Cornwall. Montol, the celebration of Cornish midwinter traditions and customs associated with Old Christmas bringing with it a host of new events. Fire performers, obby osses, guise beasts and musicians will be seen in the daytime, joined by Christmas carol singers, choirs, dancers and a plethora of stall-holders.

**8. Pasty** There is nothing as quintessentially Cornish as the pasty. So put some turkey, stuffing and cranberries in some crimped pastry and you have the ultimate, unique taste of Christmas in Cornwall.

**9. Santa visits by helicopter** Cornwall may well be the only county that sees Santa descending from the skies in a helicopter rather than a sleigh. He has been known to drop in to primary schools across Cornwall thanks to his friends at RNAS Culdrose near Helston.

*[Article from Cornwall Live, 24th Nov, 2019]*



# News from Bodmin Airfield

## 2022 EVENTS

**April 2<sup>nd</sup>**

*The Porsche Club* are guests of our  
**Vintage and Aerobatic Aircraft Day**

**May 7<sup>th</sup>**

**Ladies Day Fly-in.** Our Special guest is *Polly Vacher*  
- around the world flyer

**June 11th**

**Military Wings & Wheels.**  
Celebrate and remember those that gave for us ...

**July 23rd & 24th**

**Vintage Aircraft Club (VAC) Fly-in &  
Meet the LAA Day** Special Event  
(Music & Poetry on Saturday evening)

**July 31st**

**Lundy Sunday** - 22 years since the first *Lundy Fly-in*  
- PPR essential

**August 13th**

**Cornish Pasty Fly-in & Kernow Kapers Fun Day.**  
Come and join us

**September 10th**

**Cornwall Strut Fly-in**  
The perfect end of season meeting for us all

*Flight experiences by DH Tiger Moths and PT13A Stearman will also be available during the year with dates to be confirmed later.*

All events are supported by the Cornwall Flying Club and the Cornwall Strut of the LAA.

**Pete White**



**Remembrance Sunday Service around Cardinham's Memorial Cross to the Fallen in WW1 & 2 led by Ann Kerridge, St Meubred's Lay Reader attended by people from the local Parish.**

*Lizzy Smart*



# CARDYNHAM CHURCH

At St Meubred's church we have a number of treasures. One is the oldest brass memorial in Cornwall. We have to keep it covered to protect it from bats but very soon we take delivery of a facsimile which we can display. The brass is in memory of Thomas Awmarle, rector of Cardynham from 1356 - 1401. The Latin inscription translates: *'here lies Thomas Awmarle, rector of the church of Cardynan. I ask you, brethren, pray for me, and likewise I will pray for you'*. 1356 - 1401 seem long ago and far away. What relevance can Thomas' life have for us? Thomas lived at a time of climate change, in his case a colder wetter climate. He lived through a pandemic, the Black Death, far more devastating than our one. He lived at a time of economic and political turmoil, when at the end of his time at Cardynham, the king, Richard II was violently deposed and starved to death.



The first half of the Medieval period had been relatively warm. But in Thomas' century there were colder, wetter winters. In 1315 - 1317, the Great Famine struck. It reduced the European population by at least 10%. Food shortages and sky rocketing prices were a fact of life. Wheat, oats, hay, and consequently livestock, were all in short supply. Landlords raised rents. People went hungry.

In 1348, a ship from the Continent brought the Black Death to Weymouth in Dorset. By March 1349, probably by boat, it arrived in Cornwall. There was a second, almost equally bad, outbreak in 1360 - 62, after which plague became endemic for two to three centuries. Cornwall's population fell from around 90 - 100,000 in the 1330s to between 50 and 60,000 by 1377. Truro in 1378, was described as *'almost entirely desolated and waste'*, while in 1410 it was still *'much impoverished by pestilence and death'*.

We were at war with France. On 19 September 1356 in Nouaillé, near the city of Poitiers, the King's son Edward, the Black Prince, led an army to victory over the French capturing the French king. King Edward III died on 21 June 1377. He was succeeded by the Black Prince's son, 10 year old Richard II. Everyone knows about the Peasants' Revolt in 1381. Richard later quarrelled with his cousin Henry Bolingbroke, who invaded England in June 1399, deposed Richard and had himself crowned King. Richard starved to death a prisoner at Pontefract Castle.

Come and see our new facsimile. Thomas asks us to pray for him and promises to pray for us. St Meubred's has been a place of prayer for over 1000 years. As we think of the challenges the people of Cardinham have faced in the past, let us use it as a place of prayer for each other today.

**Ann Kerridge**

# Cornwall Councillor Jenny Cruse



I have just come out of Derriford Hospital where I have been for 11 days. I cannot praise the dedication and selflessness of the NHS Staff enough. A shining light of caring people in our world . I have never appreciated the beauty and tranquillity of my garden and the countryside so much and that is why I am impassioned to keep it so. Despite all the problems of the last year or two we most assuredly live in God's own country.

I have been made aware of the problems we have in our community of returning people to their homes with care in place, so please let me know if any of you or anyone you know are struggling with this problem as there is both financial and voluntary help available in the community and I can fast track you to the people who can help.

As we approach the Christmas season I do hope you will be able to relax and enjoy some of the wonderful festive events and support the businesses in Bodmin. Much relies upon us in the villages finding time to shop in town and help keep the businesses and cafes alive. Into Bodmin have a good selection of events at the Old Library and would love your support. Miss V's coffee and cake shop on the corner of Honey Street by the church roundabout is a little treasure and well worth a visit so good to see a young local girl making a go of it.

I have chased the replacement of [Cattle Grid signs at Treslea](#) and have been told they are on the next round of replacement signs. The [skiddy grid at Preeze Cross](#) is the responsibility of National Highways so I am pursuing renovation to that, just be careful there as it is in my opinion lethal.

Staying fit and active has never been more important and one of the fun initiatives to come out of Lockdown are the *Physical Postcards* which are now running again this winter. You can sign up for this 12 week programme of postcards delivered to your home with exercise and movement ideas you can do. Just call 07936 648347 or 07730 586306 or contact me to enrol. At this time of year the paths and pavements are particularly slippery and I would urge everyone to take the greatest care possible as a break to bone is a life threatening event particularly for the elderly. So easy to forget but I have seen first hand how important it is to take care at all times.

As Christmas approaches we look forward to spending time with family and friends and we are very grateful for all the volunteers in the community who enrol to look after those that might find themselves on their own. If you think someone might be lonely at this time of year please do contact me and I can arrange for help within the community. I wish you all a very Happy Christmas and a peaceful New Year.

**Email:** [cllr.jennifer.cruse@cornwall.gov.uk](mailto:cllr.jennifer.cruse@cornwall.gov.uk) **Mobile:** 07710219465 **Jenny Cruse**

# REGULAR EVENTS

DATE	WHEN	WHAT	WHERE
Monday	7.30pm	Warleggan Young Farmers' Club	JHM
Monday	7.15pm	Millpool Chorale Practice	CRM
Tuesday	11.45 - 12.45pm	Pilates Mixed Ability Class	JHM
Tuesday	7pm	Table Tennis (821409)	JHM
Tue (1st in month)	2.30pm	Book Club (821208)	CRM
Tue (except 3rd)	7.30pm	Bell Ringing	St. Meubred's
Tue (3rd in month)	7.30pm	Parish Council Meeting	CPH
Tue (last in month)	10.30am	Millpool Coffee Morning & Book Swap	CRM
Wednesday	9.15 – 10.15am	Pilates Mixed Ability Class	CRM
Wed (4th in month)	7.30pm	Warleggan History Group	JHM
Thur (1st in month)	2.30-4pm	Community Tea	CPH
Thur (3rd in month)	12.45pm	Helpline Lunch	CPH
Sun (1st in month)	10.45am-12	KIDZ CLUB	CRM
Sun (2nd in month)	4pm	Café Church	CPH
Sunday	10.30am	Table Tennis (821409)	JHM

CRM = THE COMMUNITY ROOM, MILLPOOL METHODIST CHURCH

CPH = CARDINHAM PARISH HALL,

JHM = JUBILEE HALL MOUNT

**PLEASE NOTE: PLEASE CHECK IF YOU PLAN TO ATTEND ANY OF THEM.**

Please check village notice boards, emails and organisers for details.

If you have an event you would like us to publicise send details to [cmcmag@outlook.com](mailto:cmcmag@outlook.com)

**CHRISTMAS QUIZ (P33) Answers**  
1. Ebenezer 2. Five gold rings 3. New York City 4. 6th January 5. Three – gold, frankincense, and myrrh 6. Dasher, Dancer, Prancer, Vixen, Comet, Cupid, Donner, Blitzen, Rudolph 7. The Grinch 8. Six 9. White 10. Bethlehem 11. Orange 12. Coin 13. Coming 14. We Three Kings 15. Nicholas 16. 'Buddy the Elf, what's your favourite colour?' 17. C 18. England 19. A 20. The Nutcracker